

SNAI1 antibody



Catalog Number: 115440

Product name

SNAI1 antibody

Immunogen

[Human SNAI1 Recombinant protein \(His tag\)](#)

Specificity

Human, Mouse; other species not tested.

Antibody description

SNAI1 Rabbit Polyclonal antibody. Positive WB detected in HeLa cells, NIH/3T3 cells, PC-3 cells. Positive IF detected in HeLa cells. Observed molecular weight by Western-blot: 29 kDa

Preparation

This antibody was obtained by immunization of SNAI1 recombinant protein (Accession Number: NM_005985). Purification method: Antigen affinity purified.

Formulation

PBS with 0.1% sodium azide and 50% glycerol pH 7.3.

Storage

Store at -20°C. DO NOT ALIQUOT

Clonality

Polyclonal

Ig Type

Rabbit IgG

Applications

ELISA, WB, IF

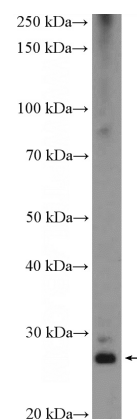
Dilutions

Recommended Dilution:

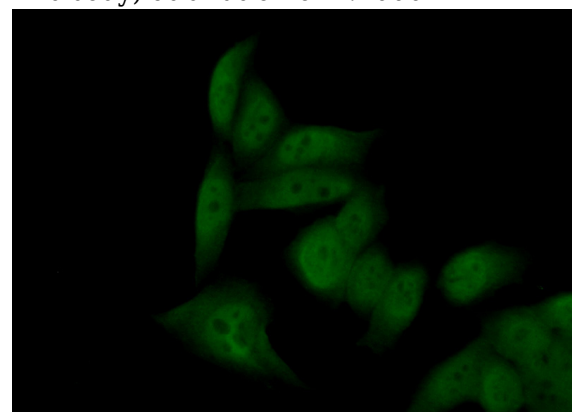
WB: 1:500-1:5000

IF: 1:50-1:500

Validations



HeLa cells were subjected to SDS PAGE followed by western blot with Catalog No:115440(SNAI1 Antibody) at dilution of 1:1000



Immunofluorescent analysis of (10% Formaldehyde) fixed HeLa cells using Catalog No:115440(SNAI1 Antibody) at dilution of 1:50 and Alexa Fluor 488-conjugated AffiniPure Goat Anti-Rabbit IgG(H+L)