

SAAL1 antibody



Catalog Number: 115040

Product name

SAAL1 antibody

Immunogen

[Human SAAL1 Recombinant protein \(GST tag & His tag\)](#)

Specificity

Human; other species not tested.

Antibody description

SAAL1 Rabbit Polyclonal antibody. Positive WB detected in HepG2 cells, HEK-293 cells. Positive IF detected in HepG2 cells. Observed molecular weight by Western-blot: 54-55 kDa

Preparation

This antibody was obtained by immunization of SAAL1 recombinant protein (Accession Number: NM_138421). Purification method: Antigen affinity purified.

Formulation

PBS with 0.1% sodium azide and 50% glycerol pH 7.3.

Storage

Store at -20°C. DO NOT ALIQUOT

Clonality

Polyclonal

Ig Type

Rabbit IgG

Applications

ELISA, WB, IF

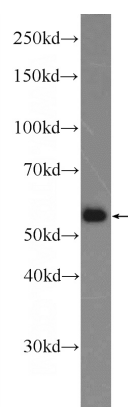
Dilutions

Recommended Dilution:

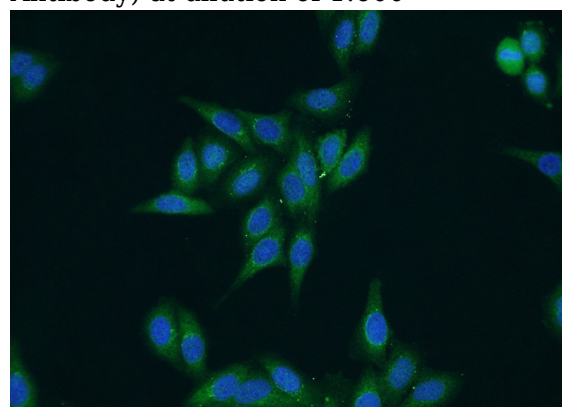
WB: 1:200-1:2000

IF: 1:20-1:200

Validations



HepG2 cells were subjected to SDS PAGE followed by western blot with Catalog No:115040(SAAL1 Antibody) at dilution of 1:600



Immunofluorescent analysis of HepG2 cells using Catalog No:115040(SAAL1 Antibody) at dilution of 1:50 and Alexa Fluor 488-conjugated AffiniPure Goat Anti-Rabbit IgG(H+L)