

ENTPD1 antibody



Catalog Number: 110330

Product name

ENTPD1 antibody

WB: 1:200-1:1000

IHC: 1:20-1:200

Specificity

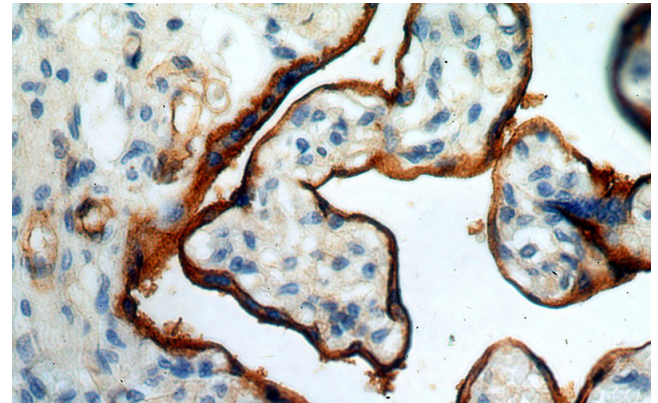
Human, Mouse, Rat; other species not tested.

IF: 1:20-1:200

Validations

Antibody description

ENTPD1 Rabbit Polyclonal antibody. Positive WB detected in mouse placenta tissue. Positive IHC detected in human placenta tissue, human liver tissue, human tonsil tissue, human tonsillitis tissue. Positive IF detected in HeLa cells. Positive FC detected in Jurkat cells. Observed molecular weight by Western-blot: 50 kDa



Preparation

This antibody was obtained by immunization of ENTPD1 recombinant protein (Accession Number: NM_001164183). Purification method: Antigen affinity purified.

Immunohistochemical of paraffin-embedded human placenta using Catalog No:110330(ENTPD1 antibody) at dilution of 1:50

Formulation

PBS with 0.02% sodium azide and 50% glycerol pH 7.3.

Storage

Store at -20°C. DO NOT ALIQUOT

Clonality

Polyclonal

Ig Type

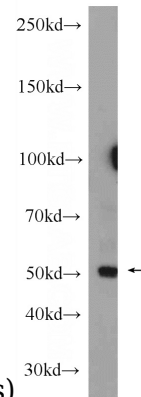
Rabbit IgG

Applications

ELISA, IHC, WB, FC, IF

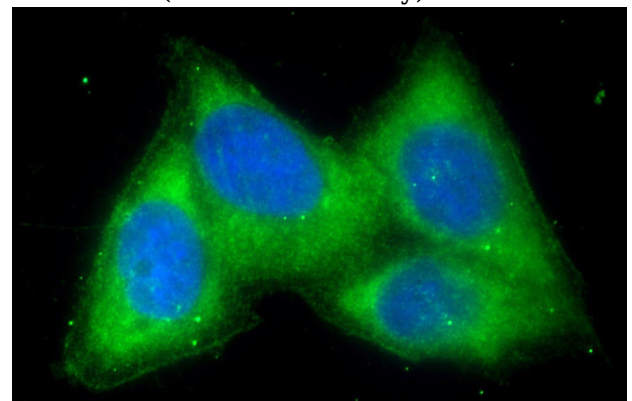
Dilutions

Recommended Dilution:



(under 40x lens)

mouse placenta tissue were subjected to SDS PAGE followed by western blot with Catalog No:110330(ENTPD1 Antibody) at dilution of 1:300



ENTPD1 antibody



Catalog Number: 110330

Immunofluorescent analysis of HeLa cells using Catalog No:110330(ENTPD1 Antibody) at dilution of 1:50 and Alexa Fluor 488-conjugated AffiniPure Goat Anti-Rabbit IgG(H+L)

1X10⁶ Jurkat cells were stained with 0.5ug ENTPD1 antibody (Catalog No:110330, red) and control antibody (blue). Fixed with 90% MeOH blocked with 3% BSA (30 min). Alexa Fluor 488-conjugated AffiniPure Goat Anti-Rabbit IgG(H+L) with dilution 1:1000.

