

ATPAF1 antibody



Catalog Number: 108320

Product name

Polyclonal

ATPAF1 antibody

Ig Type

Specificity

Rabbit IgG

human, mouse, rat; other species not tested.

Applications

Antibody description

ELISA, WB

ATPAF1 Rabbit Polyclonal antibody. Positive WB detected in human heart tissue, human skeletal muscle tissue, mouse kidney tissue, mouse liver tissue. Observed molecular weight by Western-blot: 36kd

Dilutions

Recommended Dilution:

WB: 1:500-1:5000

Preparation

Validations

This antibody was obtained by immunization of ATPAF1 recombinant protein (Accession Number: NM_001394565). Purification method: Antigen affinity purified.

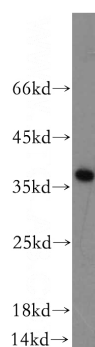
Formulation

PBS with 0.02% sodium azide and 50% glycerol pH 7.3.

Storage

Store at -20°C. DO NOT ALIQUOT

Clonality



human heart tissue were subjected to SDS PAGE followed by western blot with Catalog No:108320(ATPAF1 antibody) at dilution of 1:500