

Anti-RhoA/B/C Rabbit antibody



Catalog Number: 167320

Product name

Anti-RhoA/B/C Rabbit antibody

Specificity

Human, Mouse, Rat

Antibody description

RhoA/B/C Rabbit polyclonal antibody

Preparation

Antigen: Recombinant protein of human Rho C

Formulation

Supplied in 50nM Tris-Glycine(pH 7.4), 0.15M NaCl, 40%Glycerol, 0.01% sodium azide and 0.05% BSA.

Storage

Store at -20°C. Stable for 12 months from date of receipt.

Clonality

Polyclonal

Ig Type

Rabbit IgG

Applications

WB, IHC-P, ICC/IF, FC

Dilutions

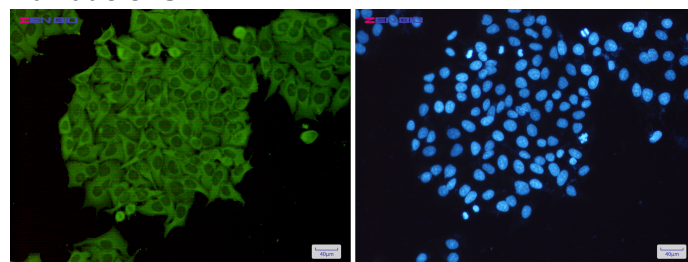
WB: 1/1000

IHC: 1/500

ICC/IF: 1/100

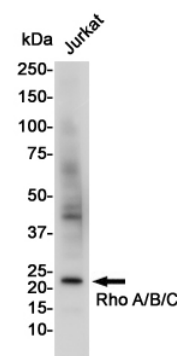
FC: 1/50

Validations



Immunocytochemistry of Rho A/B/C(green) in HeLa cells using Rho A/B/C Rabbit pAb at dilution 1/50,

and DAPI(blue)



Western blot detection of RhoA/B/C in Jurkat cell lysates using RhoA/B/C Rabbit pAb(1:1000 diluted). Predicted band size:22KDa.Observed band size:22KDa.