

KCTD15 antibody



Catalog Number: 112020

Product name

KCTD15 antibody

Immunogen

[Human KCTD15 Recombinant protein \(His tag\)](#)

Specificity

human, mouse, rat; other species not tested.

Antibody description

KCTD15 Rabbit Polyclonal antibody. Positive WB detected in HEK-293 cells, mouse lung tissue. Positive IF detected in HepG2. Observed molecular weight by Western-blot: 26kd

Preparation

This antibody was obtained by immunization of KCTD15 recombinant protein (Accession Number: NM_024076). Purification method: Antigen affinity purified.

Formulation

PBS with 0.02% sodium azide and 50% glycerol pH 7.3.

Storage

Store at -20°C. DO NOT ALIQUOT

Clonality

Polyclonal

Ig Type

Rabbit IgG

Applications

ELISA, WB, IF

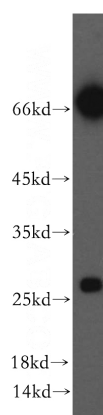
Dilutions

Recommended Dilution:

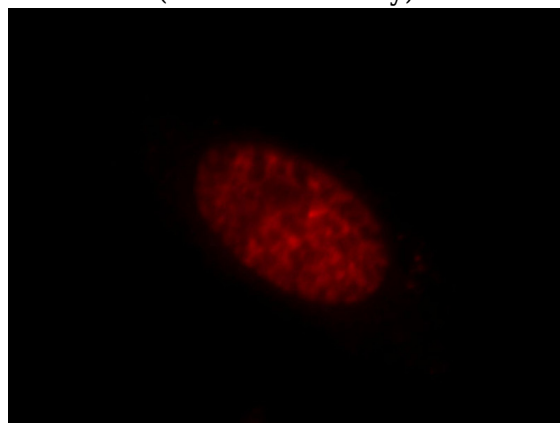
WB: 1:500-1:5000

IF: 1:10-1:100

Validations



HEK-293 cells were subjected to SDS PAGE followed by western blot with Catalog No:112020(KCTD15 antibody) at dilution of 1:500



Immunofluorescent analysis of HepG2 cells, using KCTD15 antibody Catalog No:112020 at 1:25 dilution and Rhodamine-labeled goat anti-rabbit IgG (red).