

CSRP3 antibody



Catalog Number: 109610

Product name

CSRP3 antibody

Immunogen

[Human CSRP3 Recombinant protein \(GST tag & His tag\)](#)

Specificity

Human, Mouse, Rat; other species not tested.

Antibody description

CSRP3 Rabbit Polyclonal antibody. Positive IP detected in mouse heart tissue. Positive WB detected in mouse heart tissue, human heart tissue. Positive IHC detected in human heart tissue, human pancreas cancer tissue. Observed molecular weight by Western-blot: 21 kDa

Preparation

This antibody was obtained by immunization of CSRP3 recombinant protein (Accession Number: NM_003476). Purification method: Antigen affinity purified.

Formulation

PBS with 0.1% sodium azide and 50% glycerol pH 7.3.

Storage

Store at -20°C. DO NOT ALIQUOT

Clonality

Polyclonal

Ig Type

Rabbit IgG

Applications

ELISA, WB, IHC, IP

Dilutions

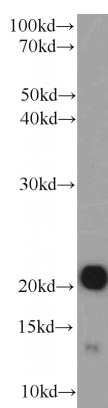
Recommended Dilution:

WB: 1:500-1:5000

IP: 1:1000-1:10000

IHC: 1:20-1:200

Validations



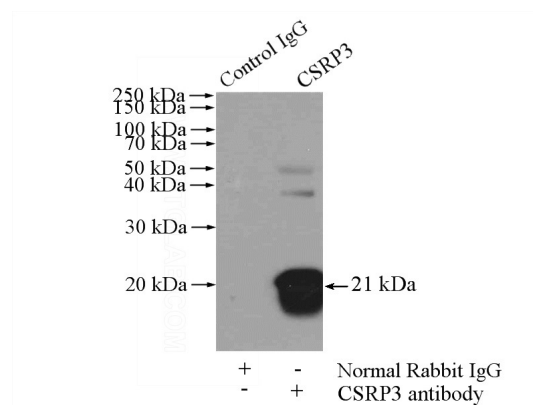
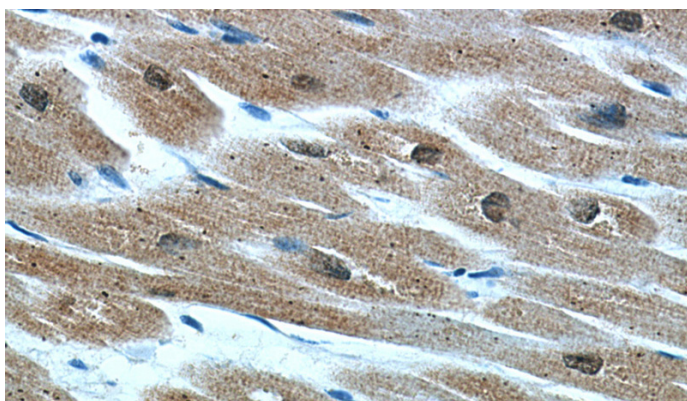
mouse heart tissue were subjected to SDS PAGE followed by western blot with Catalog No:109610(CSRP3 antibody) at dilution of 1:2000



Immunohistochemical of paraffin-embedded human heart using Catalog No:109610(CSRP3 antibody) at dilution of 1:50 (under 10x lens)

CSRP3 antibody

Catalog Number: 109610



Immunohistochemical of paraffin-embedded human heart using Catalog No:109610(CSRP3 antibody) at dilution of 1:50 (under 40x lens)

IP Result of anti-CSRP3 (IP:Catalog No:109610, 4ug; Detection:Catalog No:109610 1:2000) with mouse heart tissue lysate 4000ug.