

# RBM3 antibody



Catalog Number: 114610

## Product name

RBM3 antibody

## Immunogen

[Human RBM3 Recombinant protein \(GST tag & His tag\)](#)

## Specificity

Human, Mouse, Rat; other species not tested.

## Antibody description

RBM3 Rabbit Polyclonal antibody. Positive IP detected in MCF-7 cells. Positive WB detected in HeLa cells, A375 cells, HepG2 cells, MCF7 cells, Raji cells. Positive IHC detected in human testis tissue, human brain tissue, human colon cancer tissue, human kidney tissue, human lung tissue, human ovary tissue, human skin tissue, human spleen tissue. Positive IF detected in HeLa cells. Observed molecular weight by Western-blot: 17-20 kDa

## Preparation

This antibody was obtained by immunization of RBM3 recombinant protein (Accession Number: NM\_006743). Purification method: Antigen affinity purified.

## Formulation

PBS with 0.02% sodium azide and 50% glycerol pH 7.3.

## Storage

Store at -20°C. DO NOT ALIQUOT

## Clonality

Polyclonal

## Ig Type

Rabbit IgG

## Applications

ELISA, WB, IHC, IP, IF

## Dilutions

Recommended Dilution:

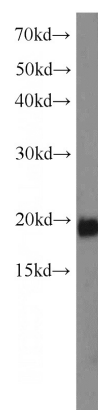
WB: 1:200-1:2000

IP: 1:200-1:1000

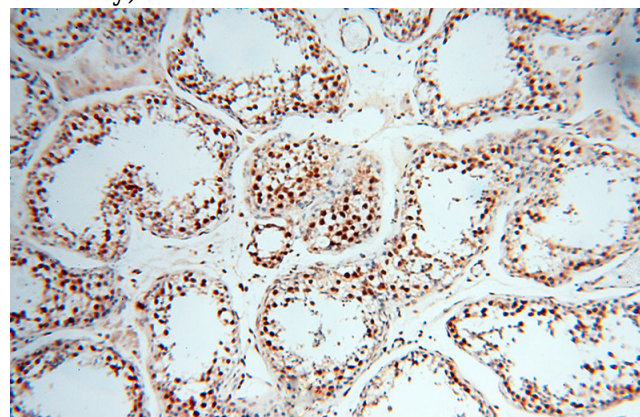
IHC: 1:20-1:200

IF: 1:20-1:200

## Validations



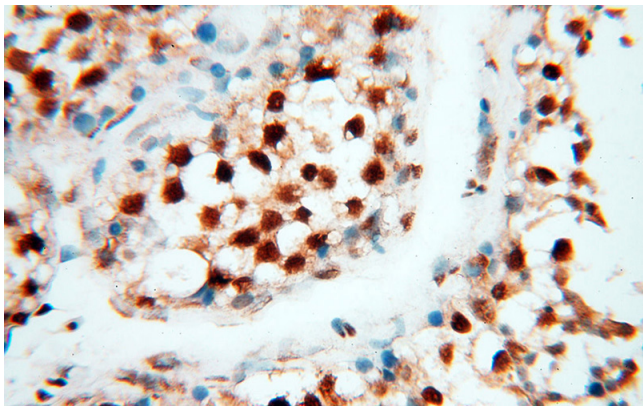
HeLa cells were subjected to SDS PAGE followed by western blot with Catalog No:114610(RBM3 antibody) at dilution of 1:500



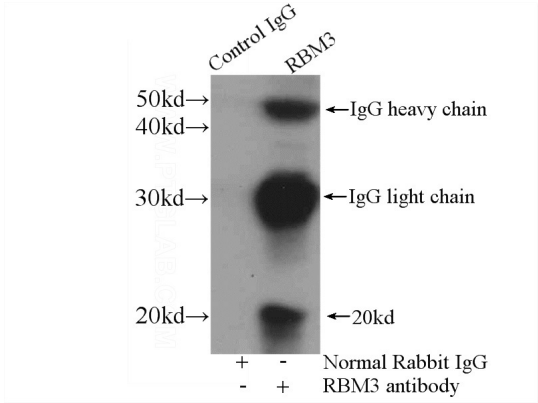
Immunohistochemical of paraffin-embedded human testis using Catalog No:114610(RBM3 antibody) at dilution of 1:50 (under 10x lens)

# RBM3 antibody

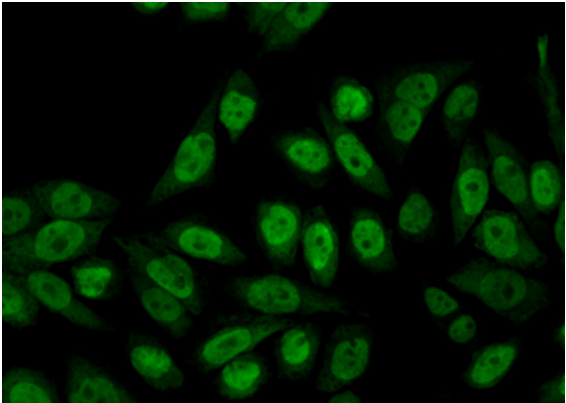
Catalog Number: 114610



Immunohistochemical of paraffin-embedded human testis using Catalog No:114610(RBM3 antibody) at dilution of 1:50 (under 40x lens)



IP Result of anti-RBM3 (IP:Catalog No:114610, 4ug; Detection:Catalog No:114610 1:300) with MCF-7 cells lysate 3200ug.



Immunofluorescent analysis of (10% Formaldehyde) fixed HeLa cells using Catalog No:114610(RBM3 Antibody) at dilution of 1:50 and Alexa Fluor 488-conjugated AffiniPure Goat Anti-Rabbit IgG(H+L)