

MAD2L1 antibody



Catalog Number: 107410

Product name

MAD2L1 antibody

Specificity

Human; other species not tested.

Antibody description

MAD2L1 Mouse Monoclonal antibody. Positive WB detected in 293 cells, COLO 320 cells. Positive IHC detected in human testis. Observed molecular weight by Western-blot: 24kD

Preparation

This antibody was obtained by immunization of MAD2L1 recombinant protein (Accession Number: NM_002358). Purification method: Protein A purified.

Formulation

PBS with 0.02% sodium azide and 50% glycerol pH 7.3.

Storage

Store at -20°C. DO NOT ALIQUOT

Clonality

Monoclonal

Ig Type

Mouse IgG2b

Applications

ELISA, WB, IHC

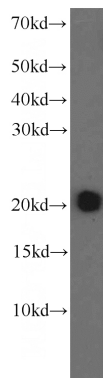
Dilutions

Recommended Dilution:

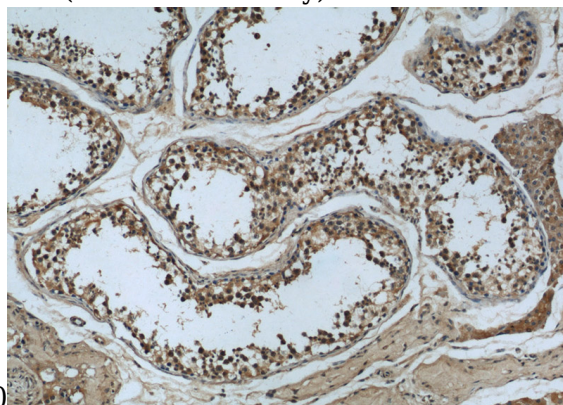
WB: 1:500-1:5000

IHC: 1:20-1:200

Validations

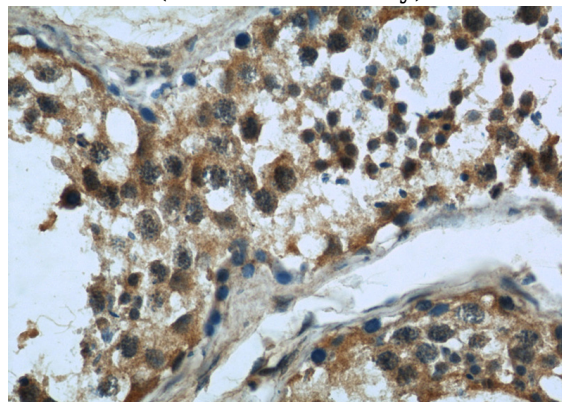


HEK-293 cells were subjected to SDS PAGE followed by western blot with Catalog No:107410(MAD2L1 antibody) at dilution of



1:1000

Immunohistochemistry of paraffin-embedded human testis slide using Catalog No:107410(MAD2L1 Antibody) at dilution of 1:50



Immunohistochemistry of paraffin-embedded human testis slide using Catalog No:107410(MAD2L1 Antibody) at dilution of 1:50