

PIH1D1 antibody



Catalog Number: 113900

Product name

PIH1D1 antibody

Recommended Dilution:

WB: 1:1000-1:10000

Specificity

Human, Mouse, Rat; other species not tested.

IP: 1:500-1:5000

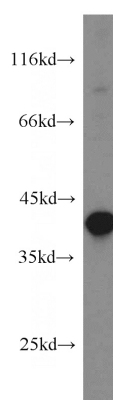
IHC: 1:20-1:200

Antibody description

PIH1D1 Rabbit Polyclonal antibody. Positive IHC detected in human lung tissue, human ovary tissue. Positive IF detected in HeLa cells. Positive WB detected in HeLa cells, A431 cells, human testis tissue, human uterus tissue, mouse eye tissue, mouse ovary tissue. Positive IP detected in HeLa cells. Observed molecular weight by Western-blot: 39 kDa

IF: 1:10-1:100

Validations



Preparation

This antibody was obtained by immunization of PIH1D1 recombinant protein (Accession Number: NM_017916). Purification method: Antigen affinity purified.

HeLa cells were subjected to SDS PAGE followed by western blot with Catalog No:113900(PIH1D1 antibody) at dilution of 1:800

Formulation

PBS with 0.02% sodium azide and 50% glycerol pH 7.3.

Storage

Store at -20°C. DO NOT ALIQUOT

Clonality

Polyclonal

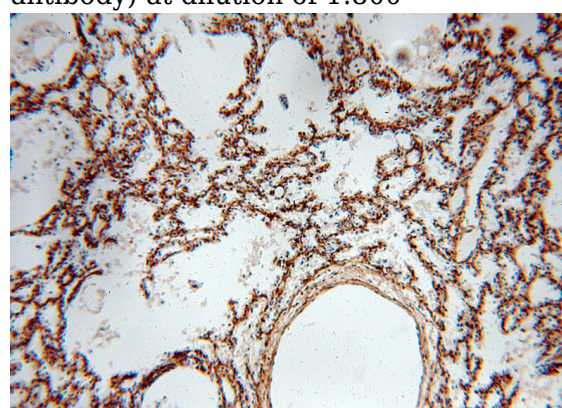
Ig Type

Rabbit IgG

Applications

ELISA, WB, IHC, IF, IP

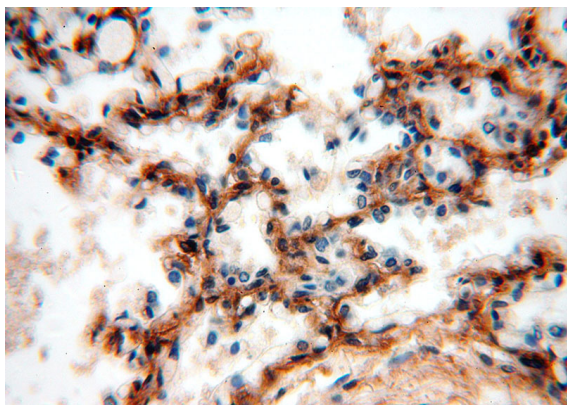
Dilutions



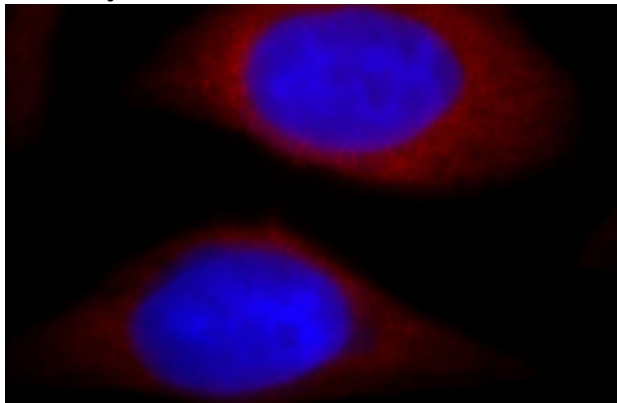
Immunohistochemical of paraffin-embedded human lung using Catalog No:113900(PIH1D1 antibody) at dilution of 1:100 (under 10x lens)

PIH1D1 antibody

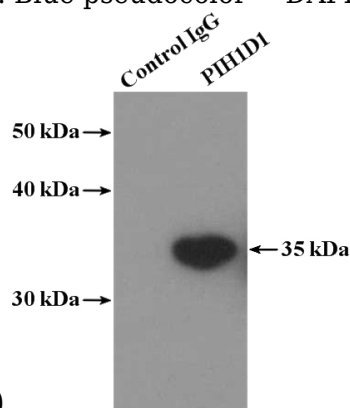
Catalog Number: 113900



Immunohistochemical of paraffin-embedded human lung using Catalog No:113900(PIH1D1 antibody) at dilution of 1:100 (under 40x lens)



Immunofluorescent analysis of HeLa cells, using PIH1D1 antibody Catalog No:113900 at 1:25 dilution and Rhodamine-labeled goat anti-rabbit IgG (red). Blue pseudocolor = DAPI (fluorescent



DNA dye).

IP Result of anti-PIH1D1 (IP:Catalog No:113900, 4ug; Detection:Catalog No:113900 1:1000) with HeLa cells lysate 1200ug.