

JUNB antibody



Catalog Number: 111900

Product name

ELISA, WB, IHC, IF, IP

JUNB antibody

Dilutions

Immunogen

Recommended Dilution:

[Human JUNB Recombinant protein \(GST tag & His tag\)](#)

WB: 1:200-1:2000

IP: 1:200-1:2000

Specificity

IHC: 1:20-1:200

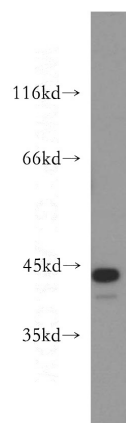
Human, Mouse, Rat; other species not tested.

IF: 1:10-1:100

Antibody description

Validations

JUNB Rabbit Polyclonal antibody. Positive IP detected in HeLa cells. Positive WB detected in MCF7 cells, C6 cells, HeLa cells, HT-1080 cells. Positive IHC detected in human gliomas tissue, human ovary tissue, human testis tissue. Positive IF detected in MCF-7 cells, HeLa cells. Observed molecular weight by Western-blot: 42 kDa, 43 kDa

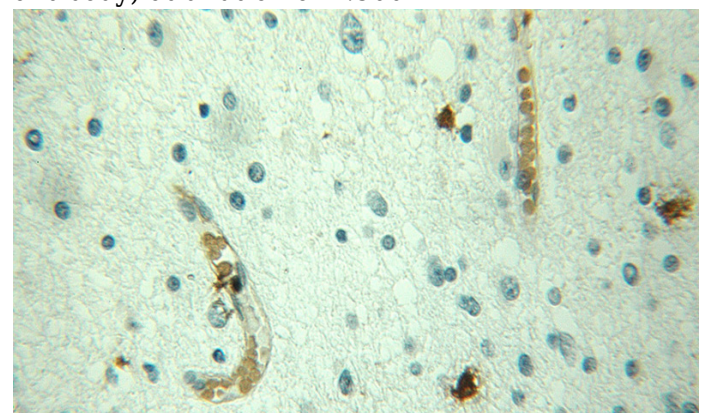


Preparation

MCF7 cells were subjected to SDS PAGE followed by western blot with Catalog No:111900(JUNB antibody) at dilution of 1:500

This antibody was obtained by immunization of JUNB recombinant protein (Accession Number: NM_002229). Purification method: Antigen affinity purified.

Formulation



PBS with 0.02% sodium azide and 50% glycerol pH 7.3.

Storage

Immunohistochemical of paraffin-embedded human gliomas using Catalog No:111900(JUNB antibody) at dilution of 1:50 (under 25x lens)

Store at -20°C. DO NOT ALIQUOT

Clonality

Polyclonal

Ig Type

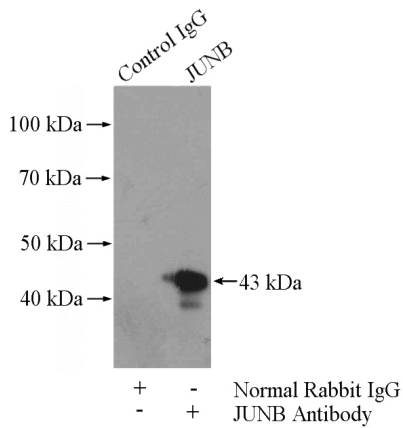
Rabbit IgG

Applications

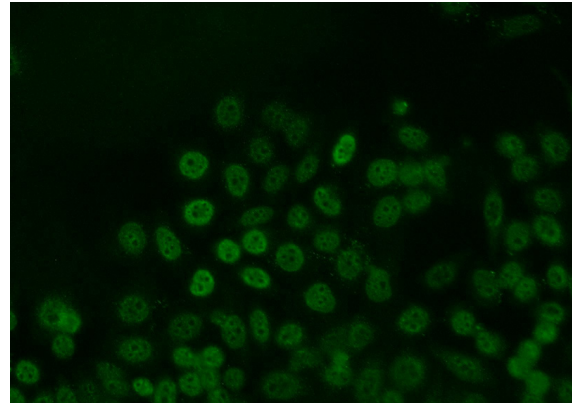
JUNB antibody



Catalog Number: 111900



IP Result of anti-JUNB (IP:Catalog No:111900, 4ug; Detection:Catalog No:111900 1:500) with HeLa cells lysate 1200ug.



Immunofluorescent analysis of MCF-7 cells using Catalog No:111900(JUNB Antibody) at dilution of 1:25 and Alexa Fluor 488-conjugated AffiniPure Goat Anti-Rabbit IgG(H+L)