

PSMD4 antibody



Catalog Number: 114400

Product name

PSMD4 antibody

Immunogen

[Human PSMD4 Recombinant protein \(GST tag & His tag\)](#)

Specificity

Human, Mouse, Rat; other species not tested.

Antibody description

PSMD4 Rabbit Polyclonal antibody. Positive FC detected in HepG2 cells. Positive IF detected in HepG2 cells. Positive IHC detected in human lung cancer tissue, human testis tissue. Positive WB detected in K-562 cells, HeLa cells, Jurkat cells, NIH/3T3 cells, Raji cells, rat spleen tissue, RAW 264.7 cells. Observed molecular weight by Western-blot: 50-55 kDa

Preparation

This antibody was obtained by immunization of PSMD4 recombinant protein (Accession Number: NM_002810). Purification method: Antigen affinity purified.

Formulation

PBS with 0.02% sodium azide and 50% glycerol pH 7.3.

Storage

Store at -20°C. DO NOT ALIQUOT

Clonality

Polyclonal

Ig Type

Rabbit IgG

Applications

ELISA, WB, IHC, FC, IF

Dilutions

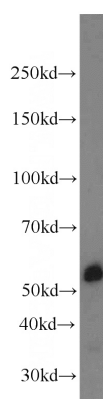
Recommended Dilution:

WB: 1:1000-1:10000

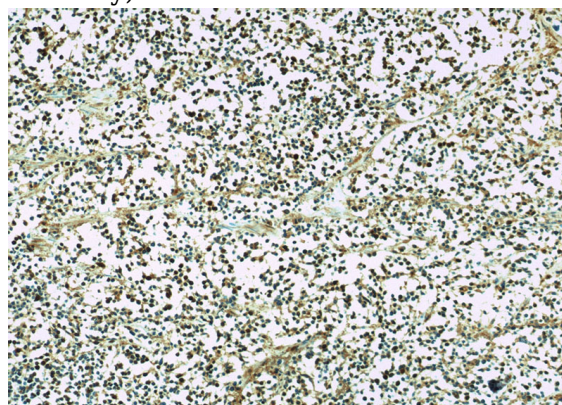
IHC: 1:20-1:200

IF: 1:20-1:200

Validations



K-562 cells were subjected to SDS PAGE followed by western blot with Catalog No:114400(PSMD4 antibody) at dilution of 1:3000

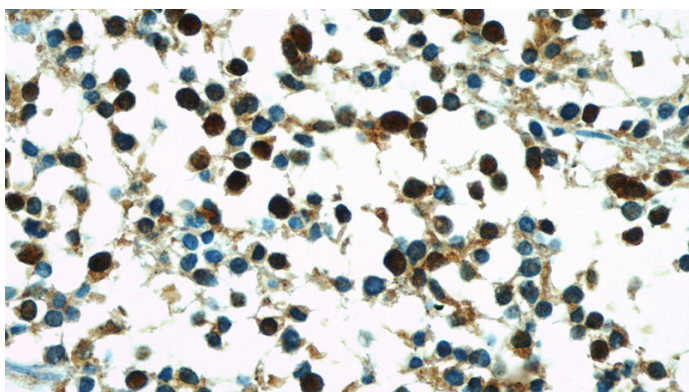


Immunohistochemistry of paraffin-embedded human lung cancer slide using Catalog No:114400(PSMD4 Antibody) at dilution of 1:50

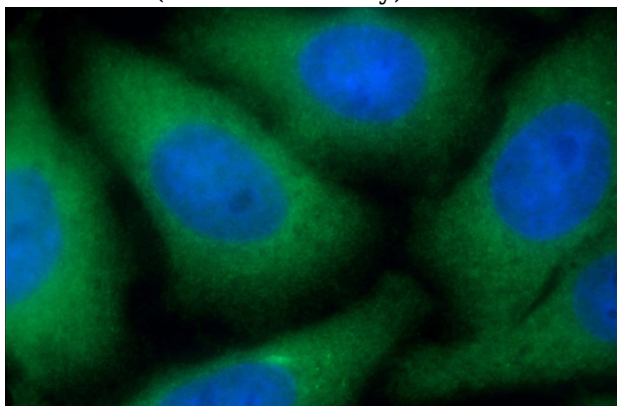
PSMD4 antibody



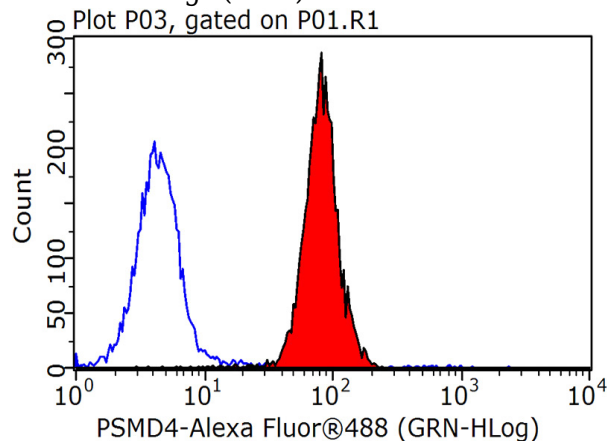
Catalog Number: 114400



Immunohistochemistry of paraffin-embedded human lung cancer slide using Catalog No:114400(PSMD4 Antibody) at dilution of 1:50



Immunofluorescent analysis of (-20oc Ethanol) fixed HepG2 cells using Catalog No:114400(PSMD4 Antibody) at dilution of 1:50 and Alexa Fluor 488-conjugated AffiniPure Goat Anti-Rabbit IgG(H+L)



1X10⁶ HepG2 cells were stained with 0.2ug PSMD4 antibody (Catalog No:114400, red) and control antibody (blue). Fixed with 90% MeOH blocked with 3% BSA (30 min). Alexa Fluor 488-conjugated AffiniPure Goat Anti-Rabbit IgG(H+L) with dilution 1:1500.