

# Recombinant SOBER1 protein (6\*His tag)



Catalog Number: 530295

## General Information

### Protein Construction

1-228 aa encoded by AT4G22305.1 was inserted into pET30a vector

### Organism

*Arabidopsis thaliana*

### Expression Host

*E. coli*

## QC Testing

### Activity

Not tested.

### Purity

85%, by SDS-PAGE with Coomassie Brilliant Blue staining.

### Endotoxin

Please contact the lab for more information.

### Stability

Store for up to 12 months at -20°C to -80°C as lyophilized powder.

### Formulation

The purified protein was Lyophilized from sterile PBS (58mM Na<sub>2</sub>HPO<sub>4</sub>, 17mM NaH<sub>2</sub>PO<sub>4</sub>, 68mM NaCl, pH7.). 5 % trehalose and 5 % mannitol are added as protectants before lyophilization.

## Usage Guide

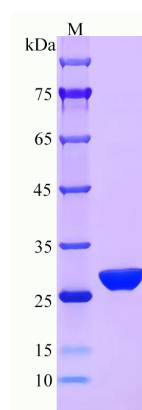
### Storage

Store it under sterile conditions at -20°C to -80°C. It is recommended that the protein be aliquoted for optimal storage. Avoid repeated freeze-thaw cycles.

### Reconstitution

Reconstitute at 0.25 µg/µl in 200 µl sterile water for short-term storage. Reconstitution with 200 µl 50% glycerol solution is recommended for longer term storage (see Stability and Storage for more details). If a different concentration is needed for your purposes please adjust the reconstitution volume as required (please note: the ion concentration of the final solution will vary according to the volume used). Note: Centrifuge vial before opening. When reconstituting, gently pipet and wash down the sides of the vial to ensure full recovery of the protein into solution.

### SDS-PAGE



Recombinant *Arabidopsis thaliana* SOBER1 SDS-PAGE