

Recombinant CLM protein (6*His tag)



Catalog Number: 530292

General Information

Gene Name Synonym

Shade avoidance 1; suppressor of nph4 2;
cytochrome p450 90b1; partially suppressing coi1
insensitivity to ja 1; dwarf 4

Protein Construction

27-513 aa encoded by AT3G50660.1 was inserted
into pET30a vector

Organism

Arabidopsis thaliana

Expression Host

E. coli

QC Testing

Activity

Not tested.

Purity

85%, by SDS-PAGE with Coomassie Brilliant Blue
staining.

Endotoxin

Please contact the lab for more information.

Stability

Store for up to 12 months at -20°C to -80°C as
lyophilized powder.

Formulation

The purified protein was Lyophilized from sterile

PBS (58mM Na₂HPO₄, 17mM NaH₂PO₄, 68mM
NaCl, pH7.). 5 % trehalose and 5 % mannitol are
added as protectants before lyophilization.

Usage Guide

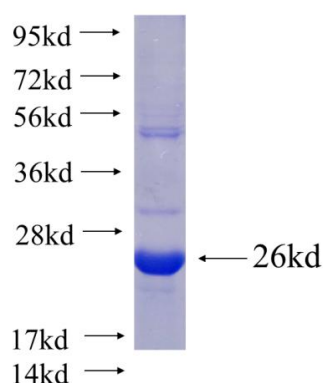
Storage

Store it under sterile conditions at -20°C to -80°C.
It is recommended that the protein be aliquoted
for optimal storage. Avoid repeated freeze-thaw
cycles.

Reconstitution

Reconstitute at 0.25 µg/µl in 200 µl sterile water
for short-term storage. Reconstitution with 200 µl
50% glycerol solution is recommended for longer
term storage (see Stability and Storage for more
details). If a different concentration is needed for
your purposes please adjust the reconstitution
volume as required (please note: the ion
concentration of the final solution will vary
according to the volume used). Note: Centrifuge
vial before opening. When reconstituting, gently
pipet and wash down the sides of the vial to
ensure full recovery of the protein into solution.

SDS-PAGE



Recombinant *Arabidopsis thaliana* CLM SDS-
PAGE