

# Human LIF Recombinant protein (6\*His tag)



Catalog Number: 524935

## General Information

### Gene Name Synonym:

### Protein Construction:

27-202 aa encoded by [NM\\_001257135](#) was inserted into pET30a vector

**Source:** Human

**Expression Host:** E coli.

## QC Testing

### Activity:

Not tested.

### Purity:

90%, by SDS-PAGE with Coomassie Brilliant Blue staining.

### Endotoxin:

Please contact the lab for more information.

### Stability:

Store for up to 12 months at -20°C to -80°C as lyophilized powder.

### Predicted N terminal:

### Molecular Mass:

### Formulation:

The purified protein was Lyophilized from sterile PBS (58mM Na<sub>2</sub>HPO<sub>4</sub>, 17mM NaH<sub>2</sub>PO<sub>4</sub>, 68mM

NaCl, pH7.). 5 % trehalose and 5 % mannitol are added as protectants before lyophilization.

## Usage Guide

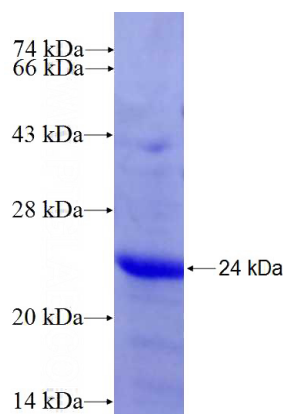
### Storage:

Store it under sterile conditions at -20°C to -80°C. It is recommended that the protein be aliquoted for optimal storage. Avoid repeated freeze-thaw cycles.

### Reconstitution:

Reconstitute at 0.25 µg/µl in 200 µl sterile water for short-term storage. Reconstitution with 200 µl 50% glycerol solution is recommended for longer term storage (see Stability and Storage for more details). If a different concentration is needed for your purposes please adjust the reconstitution volume as required (please note: the ion concentration of the final solution will vary according to the volume used). Note: Centrifuge vial before opening. When reconstituting, gently pipet and wash down the sides of the vial to ensure full recovery of the protein into solution.

### SDS-PAGE:



Recombinant Human LIF SDS-PAGE