

# Human KLK1 (His tag) recombinant protein



Catalog Number: 519864

## General Information

### Gene Name Synonym

Kallikrein-1, Kidney/Pancreas/Salivary Gland  
Kallikrein, Tissue Kallikrein, KLK1

### Protein Construction

A DNA sequence encoding the Human KLK1  
Pro19-Ser262 is expressed with a 6His tag at the  
C-terminus.

### Organism

Human

### Expression Host

Human Cells

## QC Testing

### Purity

>95% as determined by SDS-PAGE.

### Endotoxin

<1.0 EU per µg protein as determined by the LAL

method.

### Stability

Store for up to 6 months at -20°C

### Formulation

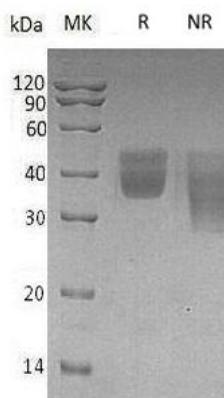
Supplied as a 0.2 µm filtered solution of 20mM  
TrisHCl, 150mM NaCl, 2mM CaCl<sub>2</sub>, pH 8.0.

## Usage Guide

### Storage

Store at <-20°C, minimize freeze-thaw cycles.

### SDS-PAGE



Human KLK1 (His tag) recombinant protein