

Human GCG (His tag) recombinant protein



Catalog Number: 519774

General Information

Gene Name Synonym

Glucagon, Glicentin, Glicentin-Related Polypeptide, GRPP, Oxyntomodulin, OXM, OXY, Glucagon, Glucagon-Like Peptide 1, GLP-1, Incretin Hormone, Glucagon-like Peptide 1, GLP-1, Glucagon-Like Peptide 2, GLP-2, GCG

Protein Construction

A DNA sequence encoding the Human GCG Arg21-Lys180 is expressed with a 6His tag at the C-terminus.

Organism

Human

Expression Host

Human Cells

QC Testing

Purity

>95% as determined by SDS-PAGE.

Endotoxin

<1.0 EU per μg protein as determined by the LAL method.

Stability

Store for up to 6 months at -20°C

Formulation

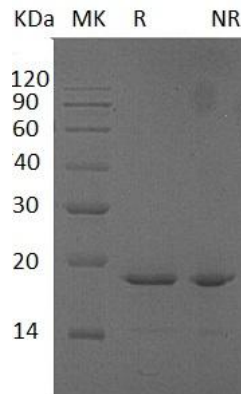
Supplied as a $0.2\ \mu\text{m}$ filtered solution of 20mM TrisHCl, 200mM NaCl, 1mM DTT, 50% Glycerol, pH 8.0.

Usage Guide

Storage

Store at $<-20^{\circ}\text{C}$, minimize freeze-thaw cycles.

SDS-PAGE



Human GCG (His tag) recombinant protein