

# Human CD300A/CMRF35H/IGSF12/HSPC083 (Fc & His tag) recombinant protein



Catalog Number: 519721

## General Information

### Gene Name Synonym

CMRF35-like molecule 8, CD300 antigen-like family member A, CMRF-35-H9, CMRF35-H, IRC1/IRC2, Immunoglobulin superfamily member 12, Inhibitory receptor protein 60, NK inhibitory receptor

### Protein Construction

A DNA sequence encoding the Human CD300A/CMRF35H/IGSF12/HSPC083 Leu18-Gln178 is expressed with a Fc, 6His tag at the C-terminus.

### Organism

Human

### Expression Host

Human Cells

## QC Testing

### Purity

>95% as determined by SDS-PAGE.

### Endotoxin

<1.0 EU per µg protein as determined by the LAL method.

### Stability

Store for up to 12 months at -20°C to -80°C as lyophilized powder. Aliquots of reconstituted

samples are stable at < -20°C for 3 months.

### Formulation

Lyophilized from a 0.2 µm filtered solution of 20mM Tris, 150mM NaCl, 5% Trehalose, pH 8.0.

## Usage Guide

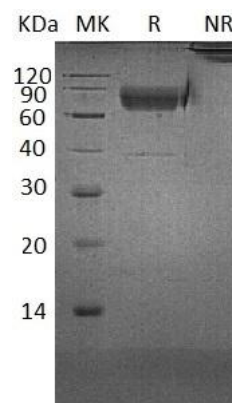
### Storage

Lyophilized protein should be stored at <-20°C, though stable at room temperature for 3 weeks. Reconstituted protein solution can be stored at 4-7°C for 2-7 days.

### Reconstitution

Always centrifuge tubes before opening. Do not mix by vortex or pipetting. It is not recommended to reconstitute to a concentration less than 100µg/ml. Dissolve the lyophilized protein in ddH<sub>2</sub>O. Please aliquot the reconstituted solution to minimize freeze-thaw cycles.

## SDS-PAGE



Human CD300A/CMRF35H/IGSF12/HSPC083 (Fc & His tag) recombinant protein