

General Information

Gene Name Synonym

Alkaline phosphatase, placental type, also known as Alkaline phosphatase Regan isozyme, Placental alkaline phosphatase 1, ALPP and PLAP, belongs to the alkaline phosphatase family.

Protein Construction

A DNA sequence encoding the Human ALPP/PLAP Ile23-Asp506 is expressed with a 6His tag at the C-terminus.

Organism

Human

Expression Host

Human Cells

QC Testing

Purity

>95% as determined by SDS-PAGE.

Endotoxin

<1.0 EU per μg protein as determined by the LAL method.

Stability

Store for up to 6 months at -20°C

Formulation

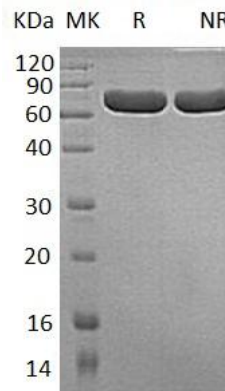
Supplied as a $0.2\ \mu\text{m}$ filtered solution of PBS, pH 7.4 .

Usage Guide

Storage

Store at $<-20^{\circ}\text{C}$, minimize freeze-thaw cycles.

SDS-PAGE



Human ALPP/PLAP (His tag) recombinant protein