

Human HSPB8/CRYAC/E2IG1/HSP22/PP1629 (His tag) recombinant protein



Catalog Number: 519351

General Information

Gene Name Synonym

Heat shock protein beta-8,HspB8,Alpha-crystallin C chain,E2-induced gene 1 protein,Protein kinase H11,Small stress protein-like protein HSP22,HSPB8,CRYAC,E2IG1,HSP22

Protein Construction

A DNA sequence encoding the Human HSPB8/CRYAC/E2IG1/HSP22/PP1629 Met1-Thr196 is expressed with a 6His tag at the C-terminus.

Organism

Human

Expression Host

E.coli

QC Testing

Purity

>95% as determined by SDS-PAGE.

Endotoxin

<1.0 EU per µg protein as determined by the LAL method.

Stability

Store for up to 6 months at -20°C

Formulation

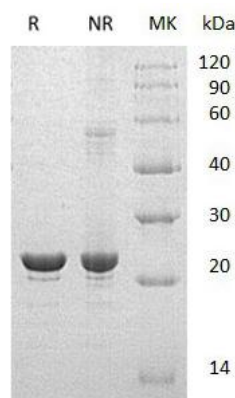
Supplied as a 0.2 µm filtered solution of 20mM PB,150mM NaCl,pH7.4.

Usage Guide

Storage

Store at <-20°C, minimize freeze-thaw cycles.

SDS-PAGE



Human HSPB8/CRYAC/E2IG1/HSP22/PP1629 (His tag) recombinant protein