

# Human FCER2/CD23A/CLEC4J/FCE2/IGEBF (His tag) recombinant protein



Catalog Number: 519298

## General Information

### Gene Name Synonym

Low affinity immunoglobulin epsilon Fc receptor; BLAST-2; C-type lectin domain family 4 member J; Fc-epsilon-RII; Immunoglobulin E-binding factor; Lymphocyte IgE receptor; CD23; FCER2; CD23A; CLEC4J; FCE2; IGEBF

### Protein Construction

A DNA sequence encoding the Human FCER2/CD23A/CLEC4J/FCE2/IGEBF Asp48-Ser321 is expressed with a 8His tag at the N-terminus.

### Organism

Human

### Expression Host

Human Cells

## QC Testing

### Purity

>95% as determined by SDS-PAGE.

### Endotoxin

<1.0 EU per µg protein as determined by the LAL method.

### Stability

Store for up to 12 months at -20°C to -80°C as lyophilized powder. Aliquots of reconstituted

samples are stable at < -20°C for 3 months.

### Formulation

Lyophilized from a 0.2 µm filtered solution of PBS, pH7.4.

## Usage Guide

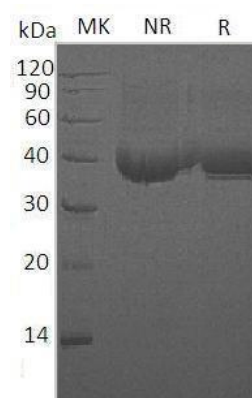
### Storage

Lyophilized protein should be stored at <-20°C, though stable at room temperature for 3 weeks. Reconstituted protein solution can be stored at 4-7°C for 2-7 days.

### Reconstitution

Always centrifuge tubes before opening. Do not mix by vortex or pipetting. It is not recommended to reconstitute to a concentration less than 100µg/ml. Dissolve the lyophilized protein in ddH<sub>2</sub>O. Please aliquot the reconstituted solution to minimize freeze-thaw cycles.

## SDS-PAGE



Human FCER2/CD23A/CLEC4J/FCE2/IGEBF (His tag) recombinant protein