

# Human MDH1/MDHA (His tag) recombinant protein



Catalog Number: 519244

## General Information

### Gene Name Synonym

Malate Dehydrogenase Cytoplasmic, Cytosolic  
Malate Dehydrogenase, Diodophenylpyruvate  
Reductase, MDH1, MDHA

### Protein Construction

A DNA sequence encoding the Human  
MDH1/MDHA Ser2-Ala334 is expressed with a  
6His tag at the C-terminus.

### Organism

Human

### Expression Host

E.coli

## QC Testing

### Purity

>95% as determined by SDS-PAGE.

### Endotoxin

<1.0 EU per µg protein as determined by the LAL

method.

### Stability

Store for up to 6 months at -20°C

### Formulation

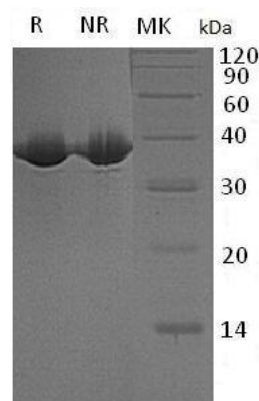
Supplied as a 0.2 µm filtered solution of 20mM  
Tris, 150mM NaCl, pH 8.0.

## Usage Guide

### Storage

Store at <-20°C, minimize freeze-thaw cycles.

### SDS-PAGE



Human MDH1/MDHA (His tag) recombinant protein