

Human BCL2L2/BCLW/KIAA0271 (His tag) recombinant protein



Catalog Number: 518972

General Information

Gene Name Synonym

Bcl-2-Like Protein 2, Bcl2-L-2, Apoptosis Regulator
Bcl-W, BCL2L2, BCLW, KIAA0271

Protein Construction

A DNA sequence encoding the Human
BCL2L2/BCLW/KIAA0271 Ala2-Thr172 is
expressed with a 6His tag at the C-terminus.

Organism

Human

Expression Host

E. coli

QC Testing

Purity

>95% as determined by SDS-PAGE.

Endotoxin

<1.0 EU per μg protein as determined by the LAL
method.

Stability

Store for up to 6 months at -20°C

Formulation

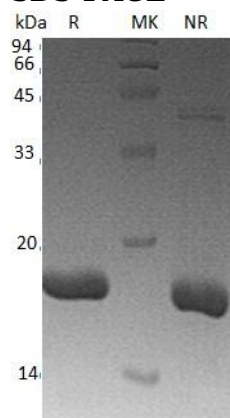
Supplied as a $0.2\ \mu\text{m}$ filtered solution of 25mM
HEPES, 100mM KCl, 20% Glycerol, pH 7.5.

Usage Guide

Storage

Store at $<-20^{\circ}\text{C}$, minimize freeze-thaw cycles.

SDS-PAGE



Human BCL2L2/BCLW/KIAA0271 (His tag)
recombinant protein