

Human CFHR1/CFHL/CFHL1/CFHL1P (His tag) recombinant protein



Catalog Number: 518543

General Information

Gene Name Synonym

Complement Factor H-Related Protein 1, FHR-1, H Factor-Like Protein 1, H-Factor-Like 1, H36, CFHR1, CFHL, CFHL1, CFHL1P, CFHR1P, FHR1, HFL1, HFL2

Protein Construction

A DNA sequence encoding the Human CFHR1/CFHL/CFHL1/CFHL1P Glu19-Arg330 is expressed with a 6His tag at the C-terminus.

Organism

Human

Expression Host

Human Cells

QC Testing

Purity

>95% as determined by SDS-PAGE.

Endotoxin

<1.0 EU per µg protein as determined by the LAL method.

Stability

Store for up to 12 months at -20°C to -80°C as lyophilized powder. Aliquots of reconstituted samples are stable at < -20°C for 3 months.

Formulation

Lyophilized from a 0.2 µm filtered solution of 20mM PB, 150mM NaCl, pH 7.4.

Usage Guide

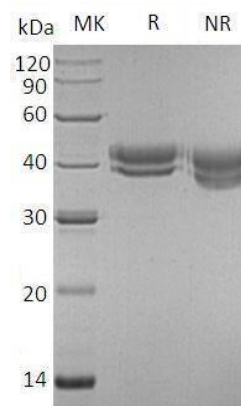
Storage

Lyophilized protein should be stored at <-20°C, though stable at room temperature for 3 weeks. Reconstituted protein solution can be stored at 4-7°C for 2-7 days.

Reconstitution

Always centrifuge tubes before opening. Do not mix by vortex or pipetting. It is not recommended to reconstitute to a concentration less than 100µg/ml. Dissolve the lyophilized protein in ddH₂O. Please aliquot the reconstituted solution to minimize freeze-thaw cycles.

SDS-PAGE



Human CFHR1/CFHL/CFHL1/CFHL1P (His tag)
recombinant protein