

# Human SMAD1/BSP1/MADH1/MADR1 (GST tag) recombinant protein



Catalog Number: 518530

## General Information

### Gene Name Synonym:

Mothers Against Decapentaplegic Homolog 1, MAD Homolog 1, Mothers Against DPP Homolog 1, JV4-1, Mad-Related Protein 1, SMAD Family Member 1, Transforming Growth Factor-Beta-Signaling Protein 1, BSP-1, SMAD1, BSP1, MADH1, SMAD 1, Smad1, hSMAD1, MADR1

### Protein Construction:

A DNA sequence encoding the Human SMAD1/BSP1/MADH1/MADR1 Met1-Ser465 is expressed with a GST tag at the N-terminus.

**Source:** Human

**Expression Host:** E.coli

## QC Testing

**Activity:**

**Purity:**

>95% as determined by SDS-PAGE.

**Endotoxin:**

<1.0 EU per  $\mu\text{g}$  protein as determined by the LAL method.

**Stability:**

Store for up to 12 months at  $-20^{\circ}\text{C}$  to  $-80^{\circ}\text{C}$  as lyophilized powder. Aliquots of reconstituted samples are stable at  $< -20^{\circ}\text{C}$  for 3 months.

**Predicted N terminal:**

**Molecular Mass:**

**Formulation:**

Lyophilized from a  $0.2\ \mu\text{m}$  filtered solution of 20mM TrisHCl, 150mM NaCl, pH 8.0 .

**Usage Guide**

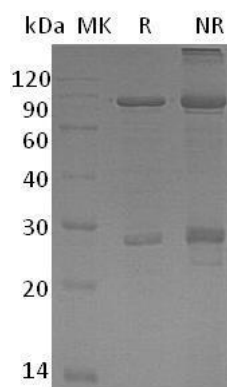
**Storage:**

Lyophilized protein should be stored at  $< -20^{\circ}\text{C}$ , though stable at room temperature for 3 weeks. Reconstituted protein solution can be stored at  $4-7^{\circ}\text{C}$  for 2-7 days.

**Reconstitution:**

Always centrifuge tubes before opening. Do not mix by vortex or pipetting. It is not recommended to reconstitute to a concentration less than  $100\ \mu\text{g}/\text{ml}$ . Dissolve the lyophilized protein in ddH<sub>2</sub>O. Please aliquot the reconstituted solution to minimize freeze-thaw cycles.

**SDS-PAGE:**



Human SMAD1/BSP1/MADH1/MADR1 (GST tag) recombinant protein