

# Human LYPLA2/APT2 (His tag) recombinant protein



Catalog Number: 518477

## General Information

### Gene Name Synonym

Acyl-Protein Thioesterase 2, APT-2, Lysophospholipase II, LPL-II, LysoPLA II, LYPLA2, APT2

### Protein Construction

A DNA sequence encoding the Human LYPLA2/APT2 Met1-Val231 is expressed with a 6His tag at the C-terminus.

### Organism

Human

### Expression Host

E. coli

## QC Testing

### Purity

>95% as determined by SDS-PAGE.

### Endotoxin

<1.0 EU per µg protein as determined by the LAL

method.

### Stability

Store for up to 6 months at -20°C

### Formulation

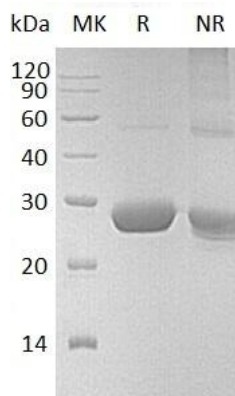
Supplied as a 0.2 µm filtered solution of 20mM Tris, 1mM DTT, 0.1M NaCl, pH 8.0.

## Usage Guide

### Storage

Store at <-20°C, minimize freeze-thaw cycles.

### SDS-PAGE



Human LYPLA2/APT2 (His tag) recombinant protein