

Human CXCL12/SDF1/SDF1A/SDF1B recombinant protein



Catalog Number: 518434

General Information

Gene Name Synonym

Stromal Cell-Derived Factor 1, SDF-1, hSDF-1, C-X-C Motif Chemokine 12, Interocrine Reduced in Hepatomas, IRH, hIRH, Pre-B Cell Growth-Stimulating Factor, PBSF, CXCL12, SDF1, SDF1A, SDF1B

Protein Construction

A DNA sequence encoding the Human CXCL12/SDF1/SDF1A/SDF1B Lys22-Lys89 is expressed.

Organism

Human

Expression Host

E.coli

QC Testing

Purity

>95% as determined by SDS-PAGE.

Endotoxin

<1.0 EU per µg protein as determined by the LAL method.

Stability

Store for up to 12 months at -20°C to -80°C as lyophilized powder. Aliquots of reconstituted samples are stable at < -20°C for 3 months.

Formulation

Lyophilized from a 0.2 µm filtered solution of 20mM PB, 150mM NaCl, pH 7.2.

Usage Guide

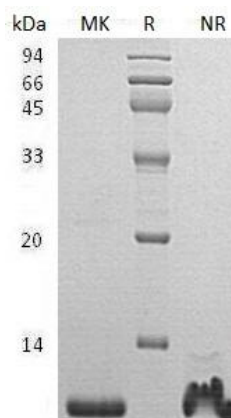
Storage

Lyophilized protein should be stored at <-20°C, though stable at room temperature for 3 weeks. Reconstituted protein solution can be stored at 4-7°C for 2-7 days.

Reconstitution

Always centrifuge tubes before opening. Do not mix by vortex or pipetting. It is not recommended to reconstitute to a concentration less than 100µg/ml. Dissolve the lyophilized protein in ddH₂O. Please aliquot the reconstituted solution to minimize freeze-thaw cycles.

SDS-PAGE



Human CXCL12/SDF1/SDF1A/SDF1B recombinant protein