

# Human MAP1LC3A (His tag) recombinant protein



Catalog Number: 518010

## General Information

### Gene Name Synonym

Microtubule-Associated Proteins 1A/1B Light Chain 3A, Autophagy-Related Protein LC3 A, Autophagy-Related Ubiquitin-Like Modifier LC3 A, MAP1 Light Chain 3-Like Protein 1, MAP1A/MAP1B Light Chain 3 A, MAP1A/MAP1B LC3 A, Microtubule-Associated Protein 1 Light Chain 3 Alpha, MAP1LC3A

### Protein Construction

A DNA sequence encoding the Human MAP1LC3A Met1-Phe121 is expressed with a 6His tag at the C-terminus.

### Organism

Human

### Expression Host

E.coli

## QC Testing

### Purity

>95% as determined by SDS-PAGE.

### Endotoxin

<1.0 EU per  $\mu$ g protein as determined by the LAL method.

### Stability

Store for up to 6 months at -20°C

### Formulation

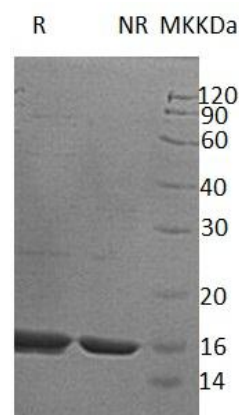
Supplied as a 0.2  $\mu$ m filtered solution of 20mM Tris, 20% Glycerol, 0.1M NaCl, pH 8.0.

## Usage Guide

### Storage

Store at <-20°C, minimize freeze-thaw cycles.

### SDS-PAGE



Human MAP1LC3A (His tag) recombinant protein