

Human CD3E recombinant protein (C-His)



Catalog Number: 514824

General Information

Gene Name Synonym

T-cell surface antigen T3/Leu-4 epsilon chain; CD antigen CD3e

Protein Construction

A DNA sequence encoding the human CD3E (NP_000724.1) (Met1-Asp126) was expressed with a polyhistidine tag at the C-terminus.

Organism

Human

Expression Host

CHO Stable Cells

QC Testing

Purity

> 95 % as determined by SDS-PAGE.

Endotoxin

< 1.0 EU per μ g protein as determined by the LAL method.

Stability

Samples are stable for up to twelve months from date of receipt at -70°C

Predicted N terminal

Asp 23

Molecular Mass

The recombinant human CD3E consists of 115 amino acids and predicts a molecular mass of 13.2 kDa.

Formulation

Lyophilized from sterile PBS, pH 7.4.

1. Normally 5 % - 8 % trehalose, mannitol and 0.01% Tween80 are added as protectants before lyophilization. Specific concentrations are included in the hardcopy of COA.

2. Please contact us for any concerns or special requirements.

Usage Guide

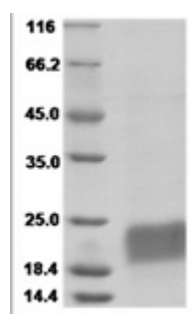
Storage

Store it under sterile conditions at -20°C to -80°C. It is recommended that the protein be aliquoted for optimal storage. Avoid repeated freeze-thaw cycles.

Reconstitution

A hardcopy of COA with reconstitution instruction is sent along with the products. Please refer to it for detailed information.

SDS-PAGE



Human CD3e/CD3 epsilon Protein 14761