

General Information

Gene Name Synonym

CHD-4; EC 3.6.4.12; ATP-dependent helicase
CHD4; Mi-2 autoantigen 218 kDa protein; Mi2-
beta

Protein Construction

A DNA sequence encoding the human CHD4
(NP_001264.2) 1554-1912 aa was fused with the
N-terminal GST tag

Organism

Human

Expression Host

E. coli

QC Testing

Activity

Not tested.

Endotoxin

Please contact the lab for more information.

Stability

Store for up to 12 months at -20°C to -80°C as
lyophilized powder.

Formulation

Protein lyophilized in sterile PBS (58 mM
Na₂HPO₄, 17 mM NaH₂PO₄, 68 mM NaCl, 100
mM GSH, pH 8.0). Trehalose (5-8%) and mannitol

(5-8%) protectants were added before
lyophilization.

Usage Guide

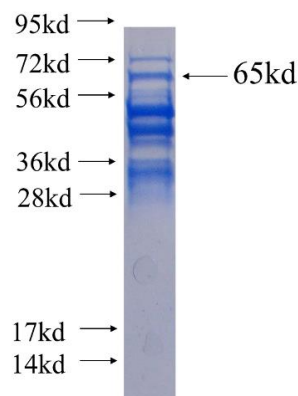
Storage

Store it under sterile conditions at -20°C to -80°C.
It is recommended that the protein be aliquoted
for optimal storage. Avoid repeated freeze-thaw
cycles.

Reconstitution

Reconstitute at 0.25 µg/µl in sterile water for
short-term storage. Reconstitution with 50%
glycerol solution is recommended for longer term
storage (see Stability and Storage for more
details). If a different concentration is needed for
your purposes please adjust the reconstitution
volume as required (please note: the ion
concentration of the final solution will vary
according to the volume used). Note: Centrifuge
vial before opening. When reconstituting, gently
pipet and wash down the sides of the vial to
ensure full recovery of the protein into solution.

SDS-PAGE



Recombinant human CHD4 SDS-PAGE