

General Information

Protein Construction

A DNA sequence encoding the mouse LIF (NP_032527.1) (Met1-Phe203) was expressed and purified.

Organism

Mouse

Expression Host

Human Cells

QC Testing

Activity

Measured by its ability to inhibit the proliferation of M1 mouse myeloid leukemia cells. The ED₅₀ for this effect is typically 0.1-0.5 ng/mL.

Purity

> 95 % as determined by SDS-PAGE

Endotoxin

< 1.0 EU per µg of the protein as determined by the LAL method

Stability

Samples are stable for up to twelve months from date of receipt at -70°C

Predicted N terminal

Ser 24

Molecular Mass

The recombinant mouse LIF consists of 180 amino acids and predicts a molecular mass of 19.9 kDa. It migrates as approximately 34.1 kDa band in SDS-PAGE under reducing conditions.

Formulation

Lyophilized from sterile PBS, pH 7.4.

1. 5 % trehalose and mannitol are added as protectants before lyophilization.

2. Please contact us for any concerns or special requirements.

Usage Guide

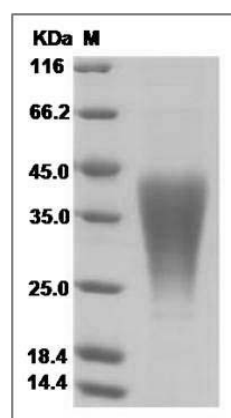
Storage

Store it under sterile conditions at -20°C to -80°C. It is recommended that the protein be aliquoted for optimal storage. Avoid repeated freeze-thaw cycles.

Reconstitution

Adding sterile water, prepare a stock solution of 0.25 mg/ml. Concentration is measured by UV-Vis.

SDS-PAGE



Mouse LIF Protein SDS-PAGE