

# Rhesus FGFR1/CD331 (Fc Tag) recombinant protein



Catalog Number: 504758

## General Information

### Protein Construction

A DNA sequence encoding the rhesus FGFR1 (NP\_001253576.1) (Met1-Tyr283) was expressed with the Fc region of human IgG1 at the C-terminus.

### Organism

Rhesus

### Expression Host

Human Cells

## QC Testing

### Activity

Measured by its binding ability in a functional ELISA.

Immobilized human FGF10 (10573-HNAE) at 10 µg/ml (100 µl/well) can bind Rhesus FGFR1-Fc with a linear range of 31.25-2000 ng/mL.

### Purity

> 95 % as determined by SDS-PAGE

### Endotoxin

< 1.0 EU per µg of the protein as determined by the LAL method

### Stability

Samples are stable for up to twelve months from date of receipt at -70°C

### Predicted N terminal

Arg 22

## Molecular Mass

The recombinant rhesus FGFR1 comprises 503 amino acids and has a calculated molecular mass of 56.2 KDa.

## Formulation

Lyophilized from sterile PBS, pH 7.4

1. 5 % trehalose and mannitol are added as protectants before lyophilization.

2. Please contact us for any concerns or special requirements.

## Usage Guide

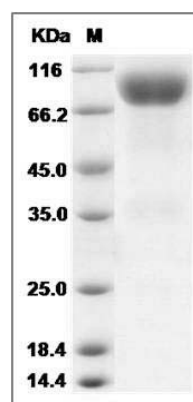
### Storage

Store it under sterile conditions at -20°C to -80°C. It is recommended that the protein be aliquoted for optimal storage. Avoid repeated freeze-thaw cycles.

### Reconstitution

Adding sterile water, prepare a stock solution of 0.25 mg/ml. Concentration is measured by UV-Vis.

## SDS-PAGE



Cynomolgus FGFR1 / CD331 Protein (Fc Tag)  
SDS-PAGE