

Human IL-35 (Fc Tag) recombinant protein



Catalog Number: 504537

General Information

Protein Construction

A DNA sequence encoding the human IL35 complex composed of IL27B subunit (NP_005746.2) (Met 1-Lys 229) and the mature form of human IL12 p35 subunit (P29459) (Arg 23-Ser 219) linked by a polypeptide linker was fused with the Fc region of human IgG1 at the C-terminus.

Organism

Human

Expression Host

Human Cells

QC Testing

Activity

Measured by its ability to bind biotinylated human IL6RB-Fch (Cat:501833) in a functional ELISA.

Purity

> 85 % as determined by SDS-PAGE

Endotoxin

< 1.0 EU per μ g of the protein as determined by the LAL method

Stability

Samples are stable for up to twelve months from date of receipt at -70°C

Predicted N terminal

Arg 21

Molecular Mass

The recombinant human IL35/Fc is a disulfide-linked homodimeric protein. The reduced monomer consists of 645 amino acids and has a predicted molecular mass of 73.4 kDa. In SDS-PAGE under reducing conditions, the apparent molecular mass of rhIL35/Fc monomer is approximately 90-100 kDa due to glycosylation.

Formulation

Lyophilized from sterile PBS, pH 7.4

1. 5 % trehalose and mannitol are added as protectants before lyophilization.
2. Please contact us for any concerns or special requirements.

Usage Guide

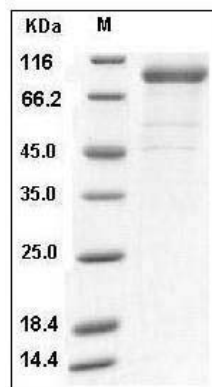
Storage

Store it under sterile conditions at -20°C to -80°C. It is recommended that the protein be aliquoted for optimal storage. Avoid repeated freeze-thaw cycles.

Reconstitution

Adding sterile water, prepare a stock solution of 0.25 mg/ml. Concentration is measured by UV-Vis.

SDS-PAGE



Human IL-35 (IL12A & IL27B) Protein (Fc Tag)
SDS-PAGE