

General Information

Gene Name Synonym

Tissue-type plasminogen activator chain A; Tissue-type plasminogen activator chain B

Protein Construction

The ? chain (Ile 311-Pro 562) of mature human tPA (NP_000921.1) was obtained after cleavage of the N-terminal human IgG1 Fc region from the purified chimera.

Organism

Human

Expression Host

Human Cells

QC Testing

Purity

> 95 % as determined by SDS-PAGE

Endotoxin

< 1.0 EU per μg of the protein as determined by the LAL method

Stability

Samples are stable for up to twelve months from date of receipt at -70°C

Predicted N terminal

Ile 311

Molecular Mass

The recombinant human tPA ? chain consists of

252 amino acids and has a predicted molecular mass of 28 kDa. As a result of glycosylation, the apparent molecular mass of rh tPA? is approximately 38 kDa in SDS-PAGE under reducing conditions.

Formulation

Lyophilized from sterile 100mM Glycine, 10mM NaCl, 50mM Tris, pH 7.5

1. 5 % trehalose and mannitol are added as protectants before lyophilization.
2. Please contact us for any concerns or special requirements.

Usage Guide

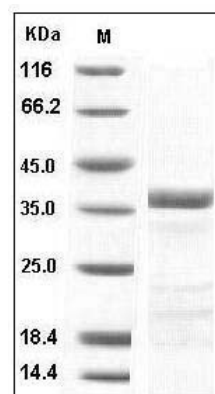
Storage

Store it under sterile conditions at -20°C to -80°C . It is recommended that the protein be aliquoted for optimal storage. Avoid repeated freeze-thaw cycles.

Reconstitution

Adding sterile water, prepare a stock solution of 0.25 mg/ml. Concentration is measured by UV-Vis.

SDS-PAGE



Human tPA / PLAT Protein SDS-PAGE