

# Human K-Ras (His Tag) recombinant protein



Catalog Number: 504300

## General Information

### Gene Name Synonym

K-Ras 2; Ki-Ras; c-K-ras; c-Ki-ras; GTPase KRas, N-terminally processed

### Protein Construction

A DNA sequence encoding the native human KRAS (AAH13572.1) (Thr 2-Cys 185) was expressed, with a polyhistidine tag at the N-terminus.

### Organism

Human

### Expression Host

E. coli

## QC Testing

### Purity

> 90 % as determined by SDS-PAGE

### Endotoxin

Please contact us for more information.

### Stability

Samples are stable for up to twelve months from date of receipt at -70°C

### Predicted N terminal

Met

### Molecular Mass

The recombinant human KRAS consisting of 195

amino acids and has a calculated molecular mass of 22.5 kDa. It migrates as an 25 kDa band in SDS-PAGE under reducing conditions as predicted

### Formulation

Lyophilized from sterile 20mM Tris, 0.5M NaCl, pH 7.5

1. 5 % trehalose and mannitol are added as protectants before lyophilization.
2. Please contact us for any concerns or special requirements.

## Usage Guide

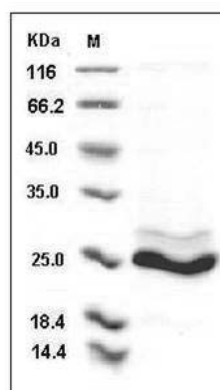
### Storage

Store it under sterile conditions at -20°C to -80°C. It is recommended that the protein be aliquoted for optimal storage. Avoid repeated freeze-thaw cycles.

### Reconstitution

Adding sterile water, prepare a stock solution of 0.25 mg/ml. Concentration is measured by UV-Vis.

### SDS-PAGE



Human K-Ras / K-Ras Protein (His Tag) SDS-PAGE