

Human HER3/ErbB3 (Fc Tag) recombinant protein



Catalog Number: 504287

General Information

Gene Name Synonym

Proto-oncogene-like protein c-ErbB-3; Tyrosine kinase-type cell surface receptor HER3

Protein Construction

A DNA sequence encoding the human ErbB3 (NP_001973.2) (Met1-Thr643) was fused with Fc region of mouse IgG at the C-terminus.

Organism

Human

Expression Host

Human Cells

QC Testing

Activity

Measured by its binding ability in a functional ELISA.

Immobilized human ErbB3-mFc at 10 µg/ml (100 µl/well) can bind biotinylated human NRG1 (Cat:503891), The EC₅₀ of biotinylated human NRG1 (Cat:503891) is 0.58-1.25 µg/ml.

Purity

> 95 % as determined by SDS-PAGE

Endotoxin

< 1.0 EU per µg of the protein as determined by the LAL method

Stability

Samples are stable for up to twelve months from date of receipt at -70°C

Predicted N terminal

Ser 20

Molecular Mass

The recombinant human ErbB3/mFc is a disulfide-linked homodimer. The reduced monomer comprises 858 amino acids and has a predicted molecular mass of 95 kDa. The apparent molecular mass of the protein is approximately 119-129 in SDS-PAGE under reducing conditions.

Formulation

Lyophilized from sterile PBS, pH 7.4.

1. 5 % trehalose and mannitol are added as protectants before lyophilization.

2. Please contact us for any concerns or special requirements.

Usage Guide

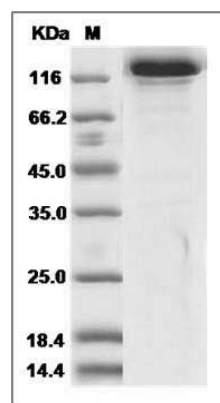
Storage

Store it under sterile conditions at -20°C to -80°C. It is recommended that the protein be aliquoted for optimal storage. Avoid repeated freeze-thaw cycles.

Reconstitution

Adding sterile water, prepare a stock solution of 0.25 mg/ml. Concentration is measured by UV-Vis.

SDS-PAGE



Human HER3 / ErbB3 Protein (Fc Tag) SDS-PAGE