

Human CXCL12 / SDF-1 beta (isoform a, His Tag) recombinant protein



Catalog Number: 504256

General Information

Gene Name Synonym

C-X-C motif chemokine 12; Intercrine reduced in hepatomas; Pre-B cell growth-stimulating factor; SDF-1-beta(3-72); SDF-1-alpha(3-67)

Protein Construction

A DNA sequence encoding the human CXCL12 isoform alpha (P48061-2) (Lys 22-Lys 89) was expressed, with a polyhistidine tag at the N-terminus.

Organism

Human

Expression Host

E. coli

QC Testing

Purity

> 90 % as determined by SDS-PAGE

Endotoxin

Please contact us for more information.

Stability

Samples are stable for up to twelve months from date of receipt at -70°C

Predicted N terminal

Met

Molecular Mass

The recombinant human CXCL12 consists of 84 amino acids and predicts a molecular mass of 10 kDa. It migrates as an approximately 12 kDa band in SDS-PAGE under reducing conditions.

Formulation

Lyophilized from sterile PBS, pH 7.4

1. 5 % trehalose and mannitol are added as protectants before lyophilization.

2. Please contact us for any concerns or special requirements.

Usage Guide

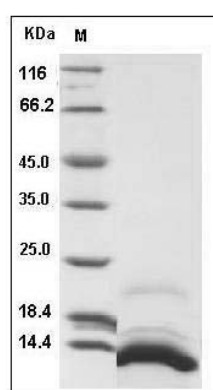
Storage

Store it under sterile conditions at -20°C to -80°C. It is recommended that the protein be aliquoted for optimal storage. Avoid repeated freeze-thaw cycles.

Reconstitution

Adding sterile water, prepare a stock solution of 0.25 mg/ml. Concentration is measured by UV-Vis.

SDS-PAGE



Human CXCL12 / SDF-1 Protein (isoform a, His Tag) SDS-PAGE