

# Human KLK6/Kallikrein 6/Neurosin (His Tag) recombinant protein



Catalog Number: 504245

## General Information

### Protein Construction

A DNA sequence encoding the human KLK6 isoform 1 (Q92876-1) (Met 1-Lys 244), was fused with a polyhistidine tag at the C-terminus.

### Organism

Human

### Expression Host

Human Cells

## QC Testing

### Activity

Measured by its ability to cleave the fluorogenic peptide substrate Boc-QARAMC, R&D Systems, Catalog # ES014.

The specific activity is > 250 pmols/min/μg.

### Purity

> 95 % as determined by SDS-PAGE

### Endotoxin

< 1.0 EU per μg of the protein as determined by the LAL method

### Stability

Samples are stable for up to twelve months from date of receipt at -70°C

### Predicted N terminal

Glu 17

### Molecular Mass

The secreted recombinant human KLK6 (pro form) consists of 239 amino acids and has a predicted molecular mass of 26.6 kDa. The apparent molecular mass of rhKLK6 is approximately 10&25 kDa in SDS-PAGE under reducing conditions due to autolysis.

### Formulation

Lyophilized from sterile PBS, pH 7.4

1. 5 % trehalose and mannitol are added as protectants before lyophilization.

2. Please contact us for any concerns or special requirements.

## Usage Guide

### Storage

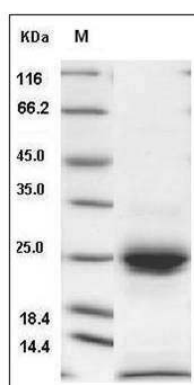
Store it under sterile conditions at -20°C to -80°C.

It is recommended that the protein be aliquoted for optimal storage. Avoid repeated freeze-thaw cycles.

### Reconstitution

Adding sterile water, prepare a stock solution of 0.25 mg/ml. Concentration is measured by UV-Vis.

### SDS-PAGE



Human KLK6 / Kallikrein 6 / Neurosin Protein (His Tag) SDS-PAGE