

# Human SELP / P Selectin (His Tag) recombinant protein



Catalog Number: 504222

## General Information

### Gene Name Synonym

CD62 antigen-like family member P; Granule membrane protein 140; Leukocyte-endothelial cell adhesion molecule 3; Platelet activation dependent granule-external membrane protein

### Protein Construction

A DNA sequence encoding the human SELP (AAN06828.1) extracellular domain (Met 1-Ala 771) was fused with a polyhistidine tag at the C-terminus.

### Organism

Human

### Expression Host

Human Cells

## QC Testing

### Purity

> 90 % as determined by SDS-PAGE

### Endotoxin

< 1.0 EU per  $\mu\text{g}$  of the protein as determined by the LAL method

### Stability

Samples are stable for up to twelve months from date of receipt at  $-70^{\circ}\text{C}$

### Predicted N terminal

Trp 42

### Molecular Mass

The secreted recombinant human SELP consists of 741 amino acids and has a predicted molecular mass of 81.3 kDa. The apparent molecular mass of the protein is approximately 120 kDa in SDS-PAGE under reducing conditions due to glycosylation.

### Formulation

Lyophilized from sterile PBS, pH 7.4

1. 5 % trehalose and mannitol are added as protectants before lyophilization.

2. Please contact us for any concerns or special requirements.

## Usage Guide

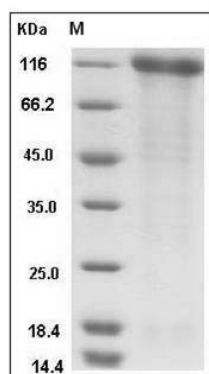
### Storage

Store it under sterile conditions at  $-20^{\circ}\text{C}$  to  $-80^{\circ}\text{C}$ . It is recommended that the protein be aliquoted for optimal storage. Avoid repeated freeze-thaw cycles.

### Reconstitution

Adding sterile water, prepare a stock solution of 0.25 mg/ml. Concentration is measured by UV-Vis.

### SDS-PAGE



Human SELP / selectin P / P-selectin Protein (His Tag) SDS-PAGE