

# Mouse BCAM / CD239 (His Tag) recombinant protein



Catalog Number: 504209

## General Information

### Gene Name Synonym

B-CAM cell surface glycoprotein; Lutheran antigen

### Protein Construction

A DNA sequence encoding the extracellular domain of mouse BCAM (Q9R069) (Met 1-Ala 541) was expressed, with a C-terminal polyhistidine tag.

### Organism

Mouse

### Expression Host

Human Cells

## QC Testing

### Activity

Measured by the ability of the immobilized protein to support the adhesion of HOS human osteogenic sarcoma cells.

When cells are added to coated plates (5 µg/mL, 100 µL/well), approximately 30-70% will adhere for 1 hour incubation at 37°C.

### Purity

> 98 % as determined by SDS-PAGE

### Endotoxin

< 1.0 EU per µg of the protein as determined by the LAL method

### Stability

Samples are stable for up to twelve months from date of receipt at -70°C

### Predicted N terminal

Glu 26

### Molecular Mass

The secreted recombinant mouse BCAM comprises 527 amino acids and has a calculated molecular mass of 58.3 kDa. As a result of glycosylation, the apparent molecular mass of rmBCAM is approximately 70-75 kDa in SDS-PAGE under reducing conditions.

### Formulation

Lyophilized from sterile PBS, pH 7.4

1. 5 % trehalose and mannitol are added as protectants before lyophilization.

2. Please contact us for any concerns or special requirements.

## Usage Guide

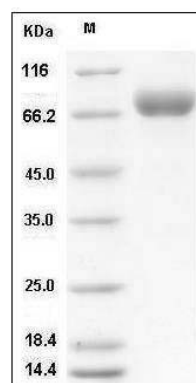
### Storage

Store it under sterile conditions at -20°C to -80°C. It is recommended that the protein be aliquoted for optimal storage. Avoid repeated freeze-thaw cycles.

### Reconstitution

Adding sterile water, prepare a stock solution of 0.25 mg/ml. Concentration is measured by UV-Vis.

### SDS-PAGE



Mouse BCAM Protein (His Tag) SDS-PAGE