

Cynomolgus REG1A (His Tag) recombinant protein



Catalog Number: 504160

General Information

Protein Construction

A DNA sequence encoding the cynomolgus REG1A (G8F4F8) (Met1-Asn166) was expressed with a polyhistidine tag at the C-terminus.

Organism

Cynomolgus

Expression Host

Human Cells

QC Testing

Purity

(55.6+42.8) % as determined by SDS-PAGE

Endotoxin

< 1.0 EU per μg of the protein as determined by the LAL method

Stability

Samples are stable for up to twelve months from date of receipt at -70°C

Predicted N terminal

Gln 23

Molecular Mass

The recombinant cynomolgus REG1A comprises 155 amino acids and has a calculated molecular mass of 177 KDa. The apparent molecular mass of

it is approximately 19 and 21 KDa respectively in SDS-PAGE.

Formulation

Lyophilized from sterile PBS, PH 7.4.

1. 5 % trehalose and mannitol are added as protectants before lyophilization.

2. Please contact us for any concerns or special requirements.

Usage Guide

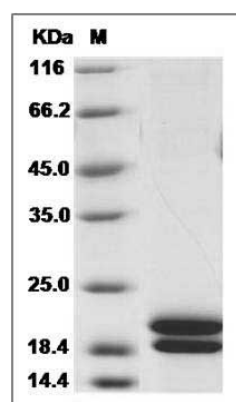
Storage

Store it under sterile conditions at -20°C to -80°C . It is recommended that the protein be aliquoted for optimal storage. Avoid repeated freeze-thaw cycles.

Reconstitution

Adding sterile water, prepare a stock solution of 0.25 mg/ml. Concentration is measured by UV-Vis.

SDS-PAGE



Cynomolgus REG1A / PSPS Protein (His Tag) SDS-PAGE