

General Information

Gene Name Synonym:

cDNA, FLJ79360, highly similar to T-cell surface glycoprotein CD4; cDNA, FLJ79361, highly similar to T-cell surface glycoprotein CD4

Protein Construction:

A DNA sequence encoding the human CD4 (NP_000607.1) extracellular domain (Met 1-Trp 390) was fused with the C-terminal polyhistidine-tagged Fc region of human IgG1 at the C-terminus.

Source: Human

Expression Host: Human Cells

QC Testing

Activity:

1. Measured by the ability of the immobilized protein to support the adhesion of NIH-3T3 mouse embryonic fibroblast cells. When 5×10^4 cells/well are added to CD4-Fc coated plates (1.25 µg/mL and 100 µL/well), approximately >50% will adhere specifically after 30 minutes at 37°C.
2. Measured by its binding ability in a functional ELISA. Immobilized human CD4 at 10 µg/mL (100 µL/well) can bind biotinylated GP140-His (Tri) (Cat: 504682) with a linear range of 0.16-1.25 µg/mL.

Purity:

> 92 % as determined by SDS-PAGE

Endotoxin:

< 1.0 EU per µg of the protein as determined by the LAL method

Stability:

Samples are stable for up to twelve months from date of receipt at -70°C

Predicted N terminal:

Lys 26

Molecular Mass:

The recombinant human CD4/Fc is a disulfide-linked homodimer. The reduced monomer consists of 612 amino acids and has a predicted molecular mass of 68.7 kDa. In SDS-PAGE under reducing conditions, the apparent molecular mass of rh CD4/Fc monomer is approximately 75 kDa due to glycosylation.

Formulation:

- Lyophilized from sterile PBS, pH 7.4
1. 5 % trehalose and mannitol are added as protectants before lyophilization.
 2. Please contact us for any concerns or special requirements.

Usage Guide

Storage:

Store it under sterile conditions at -20°C to -80°C. It is recommended that the protein be aliquoted for optimal storage. Avoid repeated freeze-thaw cycles.

Reconstitution:

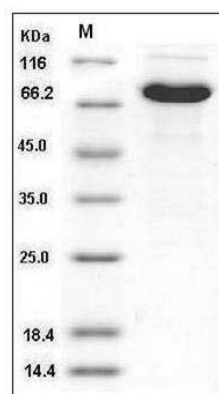
Adding sterile water, prepare a stock solution of 0.25 mg/ml. Concentration is measured by UV-Vis.

SDS-PAGE:

Human CD4 (His & Fc Tag) recombinant protein



Catalog Number: 504156



Human CD4 / LEU3 Protein (His & Fc Tag) SDS-PAGE