

General Information

Protein Construction

A DNA sequence encoding the human TRIB2 (NP_006204.1) (Met 1-Asn 343) was expressed and purified, with additional two amino acids (Gly & Pro) at the N-terminus.

Organism

Human

Expression Host

Baculovirus-Insect Cells

QC Testing

Activity

Kinase activity untested

Purity

> 82 % as determined by SDS-PAGE

Endotoxin

< 1.0 EU per μg of the protein as determined by the LAL method

Stability

Samples are stable for up to twelve months from date of receipt at -70°C

Predicted N terminal

Met

Molecular Mass

The recombinant human TRIB2 consists of 345 amino acids and predicts a molecular mass of 39 kDa. It migrates as an approximately 43 kDa band in SDS-PAGE under reducing conditions.

Formulation

Supplied as sterile 50mM Tris, 100mM NaCl, 0.5mM PMSF, pH 8.0

1. 5 % trehalose and mannitol are added as protectants before lyophilization.
2. Please contact us for any concerns or special requirements.

Usage Guide

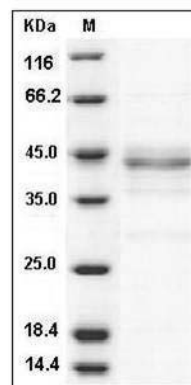
Storage

Store it under sterile conditions at -20°C to -80°C . It is recommended that the protein be aliquoted for optimal storage. Avoid repeated freeze-thaw cycles.

Reconstitution

Adding sterile water, prepare a stock solution of 0.25 mg/ml. Concentration is measured by UV-Vis.

SDS-PAGE



Human TRIB2 / TRB2 Protein SDS-PAGE