

Rhesus EphB1/Eph Receptor B1 (Fc Tag) recombinant protein



Catalog Number: 504093

General Information

Protein Construction

A DNA sequence encoding the rhesus EPHB1 (XP_001115263.1) (Met1-Pro540) was expressed with the Fc region of human IgG1 at the C-terminus.

Organism

Rhesus

Expression Host

Human Cells

QC Testing

Activity

Immobilized human EFNB1-His (Cat:501410 at 10 µg/ml (100 µl/well) can bind Rhesus EPHB1-Fc, The EC₅₀ of Rhesus EPHB1-Fc is 24.5-57.3 ng/ml.

Purity

> 85 % as determined by SDS-PAGE

Endotoxin

< 1.0 EU per µg of the protein as determined by the LAL method

Stability

Samples are stable for up to twelve months from date of receipt at -70°C

Predicted N terminal

Met 18

Molecular Mass

The recombinant rhesus EPHB1 comprises 764 amino acids and has a calculated molecular mass of 85.4 KDa.

Formulation

Lyophilized from sterile PBS, pH 7.4.

1. 5 % trehalose and mannitol are added as protectants before lyophilization.

2. Please contact us for any concerns or special requirements.

Usage Guide

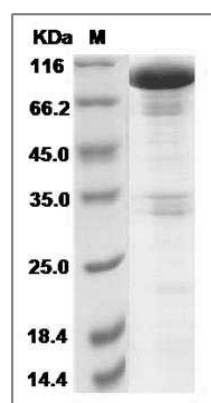
Storage

Store it under sterile conditions at -20°C to -80°C. It is recommended that the protein be aliquoted for optimal storage. Avoid repeated freeze-thaw cycles.

Reconstitution

Adding sterile water, prepare a stock solution of 0.25 mg/ml. Concentration is measured by UV-Vis.

SDS-PAGE



Cynomolgus EphB1 / EPHT2 Protein (Fc Tag)
SDS-PAGE