

# Human CD10/Nepriylsin (Fc Tag) recombinant protein



Catalog Number: 504058

## General Information

### Gene Name Synonym

Atriopeptidase; Common acute lymphocytic leukemia antigen; Enkephalinase; Neutral endopeptidase 24.11; Skin fibroblast elastase

### Protein Construction

A DNA sequence encoding the extracellular domain (Tyr 52-Trp 750) of human membrane metallo-endopeptidase (NP\_000893.2) was fused with the Fc region of human IgG1 at the N-terminus.

### Organism

Human

### Expression Host

Human Cells

## QC Testing

### Activity

Measured by its ability to cleave the fluorogenic peptide substrate, Mca-RPPGFSAFK(Dnp)-OH, (R&D Systems, Catalog # ES005). The specific activity is >1000 pmoles/min/ $\mu$ g.

### Purity

> 95 % as determined by SDS-PAGE

### Endotoxin

< 1.0 EU per  $\mu$ g of the protein as determined by the LAL method

### Stability

Samples are stable for up to twelve months from date of receipt at -70°C

### Predicted N terminal

Glu 20

### Molecular Mass

The recombinant human MME/Fc is a disulfide-linked homodimeric protein. The reduced monomer consists of 936 amino acids and predicts a molecular mass of 106 kDa. As a result of glycosylation, the rh Fc monomer migrates as approximately 120-130 kDa band in SDS-PAGE under reducing conditions.

### Formulation

Lyophilized from sterile 100mM Glycine, 10mM NaCl, 50mM Tris, pH 7.5

1. 5 % trehalose and mannitol are added as protectants before lyophilization.
2. Please contact us for any concerns or special requirements.

## Usage Guide

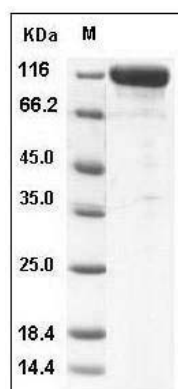
### Storage

Store it under sterile conditions at -20°C to -80°C. It is recommended that the protein be aliquoted for optimal storage. Avoid repeated freeze-thaw cycles.

### Reconstitution

Adding sterile water, prepare a stock solution of 0.25 mg/ml. Concentration is measured by UV-Vis.

### SDS-PAGE



# Human CD10/Nepriylsin (Fc Tag) recombinant protein



Catalog Number: 504058

---

Human CD10 / Nepriylsin / MME Protein (Fc Tag)    SDS-PAGE