

Mouse CD62L/L-Selectin (His & Fc Tag) recombinant protein



Catalog Number: 504029

General Information

Gene Name Synonym

CD62 antigen-like family member L; Leukocyte adhesion molecule 1; Leukocyte-endothelial cell adhesion molecule 1; Lymph node homing receptor; Lymphocyte antigen 22; Lymphocyte surface MEL-14 antigen

Protein Construction

A DNA sequence encoding the extracellular domain (Met 1-Asn 332) of mouse SELL (NP_035476.1) precursor was fused with the C-terminal polyhistidine-tagged Fc region of human IgG1 at the C-terminus.

Organism

Mouse

Expression Host

Human Cells

QC Testing

Activity

Measured by the ability of the immobilized protein to support the adhesion of U937 human histiocytic lymphoma cells. When cells are added to SELL coated plates (10 µg/mL, 100 µL/well) approximately >60% cells will adhere specifically.

Purity

> 90 % as determined by SDS-PAGE

Endotoxin

< 1.0 EU per µg of the protein as determined by the LAL method

Stability

Samples are stable for up to twelve months from date of receipt at -70°C

Predicted N terminal

Trp 39

Molecular Mass

The recombinant mouse SELL/Fc is a disulfide-linked homodimer after removal of the signal peptide. The reduced monomer consists of 542 amino acids and has a predicted molecular mass of 61 kDa. In SDS-PAGE under reducing conditions, the apparent molecular mass of rm SELL/Fc monomer is approximately 100-110 kDa due to glycosylation.

Formulation

Lyophilized from sterile PBS, pH 7.4

1. 5 % trehalose and mannitol are added as protectants before lyophilization.
2. Please contact us for any concerns or special requirements.

Usage Guide

Storage

Store it under sterile conditions at -20°C to -80°C. It is recommended that the protein be aliquoted for optimal storage. Avoid repeated freeze-thaw cycles.

Reconstitution

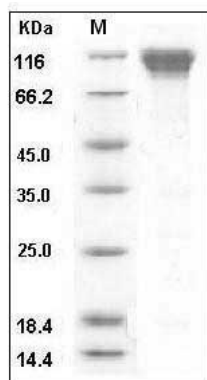
Adding sterile water, prepare a stock solution of 0.25 mg/ml. Concentration is measured by UV-Vis.

SDS-PAGE

Mouse CD62L/L-Selectin (His & Fc Tag) recombinant protein



Catalog Number: 504029



Mouse CD62L / L-Selectin / SELL Protein (His &
Fc Tag) SDS-PAGE