

Human CD226/DNAM-1 (His & Fc Tag) recombinant protein



Catalog Number: 503963

General Information

Gene Name Synonym

DNAX accessory molecule 1

Protein Construction

A DNA sequence encoding the human DNAM1 (NP_006557.2) extracellular domain (Met 1-Asn 247) was fused with the C-terminal polyhistidine-tagged Fc region of human IgG1 at the C-terminus.

Organism

Human

Expression Host

Human Cells

QC Testing

Activity

Measured by its binding ability in a functional ELISA.

1. Immobilized CD112-his at 20 µg/ml (100 µl/well) can bind biotinylated DNAM1 with a linear range of 0.078-2.5 µg/ml.
2. Immobilized CD112-Fc at 20 µg/ml (100 µl/well) can bind biotinylated DNAM1 with a linear range of 0.078-5 µg/ml.
3. Immobilized human CD155 at 20 µg/ml (100 µl/well) can bind human DNAM1 Fc chimera with a linear range of 1.28-160 ng/ml.

Purity

> 97 % as determined by SDS-PAGE

Endotoxin

< 1.0 EU per µg of the protein as determined by the LAL method

Stability

Samples are stable for up to twelve months from date of receipt at -70°C

Predicted N terminal

Glu 19

Molecular Mass

The recombinant human DNAM1/Fc is a disulfide-linked homodimer. The reduced monomer consists of 477 amino acids and has a predicted molecular mass of 54 kDa. As a result of glycosylation, the apparent molecular mass of rh DNAM1/Fc monomer is approximately 80-90 kDa in SDS-PAGE under reducing conditions.

Formulation

Lyophilized from sterile PBS, pH 7.4

1. 5 % trehalose and mannitol are added as protectants before lyophilization.
2. Please contact us for any concerns or special requirements.

Usage Guide

Storage

Store it under sterile conditions at -20°C to -80°C. It is recommended that the protein be aliquoted for optimal storage. Avoid repeated freeze-thaw cycles.

Reconstitution

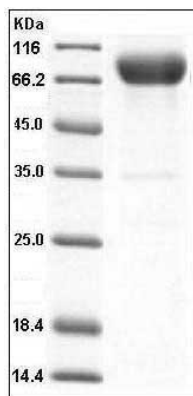
Adding sterile water, prepare a stock solution of 0.25 mg/ml. Concentration is measured by UV-Vis.

SDS-PAGE

Human CD226/DNAM-1 (His & Fc Tag) recombinant protein



Catalog Number: 503963



Human CD226 / DNAM-1 Protein (His & Fc Tag)
SDS-PAGE