

General Information

Gene Name Synonym

Methyltransferase-like region; Endothelin-converting enzyme 2 region

Protein Construction

A DNA sequence encoding the ectodomain of human endothelin converting enzyme 2 isoform A (NP_055508.3) (Gly 199-Trp 883) was fused with the Fc region of human IgG1 at the N-terminus.

Organism

Human

Expression Host

Human Cells

QC Testing

Purity

> 95 % as determined by SDS-PAGE

Endotoxin

< 1.0 EU per μg of the protein as determined by the LAL method

Stability

Samples are stable for up to twelve months from date of receipt at -70°C

Predicted N terminal

Glu 20

Molecular Mass

The recombinant human Fc/ECE2 is a disulfide-

linked homodimeric protein. The reduced monomer consists of 921 amino acids and predicts a molecular mass of 105 kDa. As a result of glycosylation, the apparent molecular mass of rh ECE2/Fc monomer is approximately 120-130 kDa in SDS-PAGE under reducing conditions.

Formulation

Lyophilized from sterile 100mM Glycine, 10mM NaCl, 50mM Tris, pH 7.5

1. 5 % trehalose and mannitol are added as protectants before lyophilization.

2. Please contact us for any concerns or special requirements.

Usage Guide

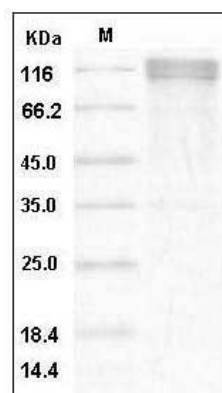
Storage

Store it under sterile conditions at -20°C to -80°C . It is recommended that the protein be aliquoted for optimal storage. Avoid repeated freeze-thaw cycles.

Reconstitution

Adding sterile water, prepare a stock solution of 0.25 mg/ml. Concentration is measured by UV-Vis.

SDS-PAGE



Human ECE-2 Protein (Fc Tag) SDS-PAGE