

Human CCL16 / HCC-4 / NCC4 (His Tag) recombinant protein



Catalog Number: 503940

General Information

Gene Name Synonym

Chemokine CC-4; Chemokine LEC; IL-10-inducible chemokine; LCC-1; Liver-expressed chemokine; Lymphocyte and monocyte chemoattractant; Monotactin-1; NCC-4; Small-inducible cytokine A16

Protein Construction

A DNA sequence encoding human CCL16 (NP_004581.1) (Gln24-Gln120) was expressed with a polyhistidine tag at the C-terminus.

Organism

Human

Expression Host

Yeast

QC Testing

Purity

> 95 % as determined by SDS-PAGE

Endotoxin

Please contact us for more information.

Stability

Samples are stable for up to twelve months from date of receipt at -70°C

Predicted N terminal

Gln 24

Molecular Mass

The recombinant human CCL16 consists of 107 amino acids and predicts a molecular mass of 12.6 KDa. It migrates as an approximately 15 KDa band in SDS-PAGE under reducing conditions.

Formulation

Lyophilized from sterile PBS, pH 7.4.

1. 5 % trehalose and mannitol are added as protectants before lyophilization.
2. Please contact us for any concerns or special requirements.

Usage Guide

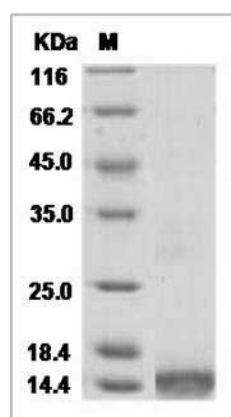
Storage

Store it under sterile conditions at -20°C to -80°C. It is recommended that the protein be aliquoted for optimal storage. Avoid repeated freeze-thaw cycles.

Reconstitution

Adding sterile water, prepare a stock solution of 0.25 mg/ml. Concentration is measured by UV-Vis.

SDS-PAGE



Human CCL16 / HCC-4 / NCC4 Protein (His Tag)
SDS-PAGE