

General Information

Gene Name Synonym:

Protein Construction:

A DNA sequence encoding the human CDC2 (NP_001777.1) (Met1-Met297) was expressed with a GST tag at the N-terminus, constructed the plasmid 1; A DNA sequence encoding the human CCNE1 (NP_001229.1) (Met1-Ala410) was expressed with a polyhistidine tag at the N-terminus, constructed the plasmid 2. The two plasmids were co-expressed and the heterotrimer was purified.

Source: Human

Expression Host: Baculovirus-Insect cells

QC Testing

Activity:

The specific activity was determined to be 150 nmol/min/mg using Histone H1 as substrate.

Purity:

> 90 % as determined by SDS-PAGE

Endotoxin:

<1.0 EU per μ g protein as determined by the LAL method.

Stability:

Samples are stable for up to twelve months from date of receipt at -70°C

Predicted N terminal:

Met & His

Molecular Mass:

The recombinant heterotrimer of human CDC2 & CCNE1 comprises 950 (522+428) amino acids and has a calculated molecular mass of 109.7 (60.4+49.3) kDa.

Formulation:

Supplied as sterile 20 mM Tris, 500 mM NaCl, 2 mM GSH, 10 % glycerol, pH 8.0.

1. 5 % trehalose and mannitol are added as protectants before lyophilization.
2. Please contact us for any concerns or special requirements.

Usage Guide

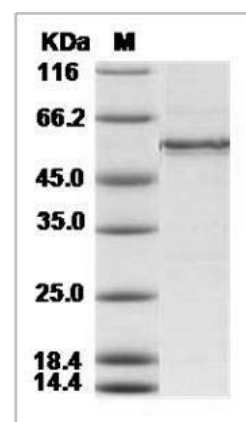
Storage:

Store it under sterile conditions at -20°C to -80°C. It is recommended that the protein be aliquoted for optimal storage. Avoid repeated freeze-thaw cycles.

Reconstitution:

Adding sterile water, prepare a stock solution of 0.25 mg/ml. Concentration is measured by UV-Vis.

SDS-PAGE:



Human CDC2 & CCNE1 Heterotrimer Protein
SDS-PAGE